

## Middle School Principal Seeking Nutley Board Seat

Read About DiMaggio's Decision On Page 3.

## Jennifer Apicella Nearing The State Scoring Record

Read About The Exciting Countdown On Page 11.

## High School Wrestling Team Keeps Record Perfect at 9-0-1

Essex County Tournament Next. See Page 11.

# The Belleville Times

Vol. 75, No. 10

Second Class Postage Paid  
At Newark, N.J. (USPS 049-220)

Published Weekly at  
Belleville, N.J. 07109

Postmaster: Send address changes to:  
The Belleville Times, P.O. Box 56, Belleville, N.J. 07109.

Thursday, February 9, 1984

35¢



**Raising The Flag** — The McDonald's Restaurant on Washington Avenue held an Olympic flag raising ceremony Tuesday morning in honor of the starting of the XIV Winter games. From left to right are: a member of the Belleville High School flag squad; Dennis Bogdan, vice president of the BHS student government; Lovelle Melillo, store activities representative; Robert D. Foglia Jr., second assistant manager; and Mayor Michael Marotti.

## Belleville's State Funding Receives Cut of \$65,000

In a surprise development, Belleville learned this week it will not receive some \$65,000 in state funds earmarked for hiring additional police and fire personnel.

Mayor Michael Marotti said at Monday's township meeting he had received a letter from the state notifying him of the decision to withdraw the expected allotment.

Protesting the decision and promising action, Assemblyman Stephen Aduato appeared before Commissioners Monday to "be the bearer of bad news."

"I am outraged that we were given no good reason for this decision," said Aduato, who joined forces in the legislature with Assemblyman Buddy Fortunato to

remedy this development.

In reaction, Aduato said the Assembly on Monday, passed a resolution to subpoena officials of the Department of Community Affairs — the source of the recent decision — to appear before the legislators to explain the decision.

"If that fails," said Aduato, "I as a member of the (state) Appropriations Committee am prepared to introduce emergency measures to appropriate the promised monies to Belleville."

Only last month, Belleville learned that it was one of 28 communities eligible under urban aid regulations to receive monies from an emergency \$7.4 million spending package approved by Gov. Kean to

avoid massive layoffs of public safety employees in major cities.

Legislators who originally wanted a \$14 million package agreed to the reduced sum under conditions that certain communities share in the large monies designated for big cities.

That agreement, forged by Senate President Carmen Orchio, stated qualifying communities must have populations over 35,000 and a combination of both low ratables and high property rates.

Under those terms, Belleville, Bloomfield and Montclair all stood to reap some aid. However, both Belleville and Montclair have been

(Please see "Urban" on page 9.)

## Seeking His Second Term

## Thomas Spillane Announces Candidacy For School Board

By Ed Capparucci

Thomas Spillane, who has served as vice president of the Belleville Board of Education for the past two years, has announced he will seek a second term on the board this April.

Spillane joins former assistant superintendent of schools Sy Grossman as a candidate seeking one of the two three-year seats available this year. Also up for grabs during the April 3 election is a seat calling for a one-year term.

Elected to the board in 1981, Spillane has served as the board's vice president for the past two years and has played a major role in budget preparations during his term.

He has served on the budget committee in each of his three years on the board, including one year as chairman. He also served on the board's insurance committee, transportation committee, and teachers and secretaries contracts negotiating teams.

"We have a very good school system in Belleville. I don't say that just because I am a trustee," said Spillane. "And I don't believe that the system got that way in the last three years. The most important improvement in the last three years has been the emphasis placed on updating the curriculum. This has been implemented through workshops and committee. I wanted to be in a position to see that curriculum updating is an ongoing process."

Spillane, 44, notes that the board hiring practices have been a strong point during his term.

"In my opinion the most significant decision the Board of Education makes are the personnel decisions," Spillane said. "When the board had to choose a new superintendent and a new board secretary-business administrator, the criteria used by the board was, 'who was the best person for the job.'"

"When the board hires other personnel, the board does that in consultation with administration," he continued. "The administrator recommends personnel to the board. The board either accepts or rejects the administrator's recommendation. In this way, I believe, we have

the best opportunity to hire the most qualified person for a particular job."

Other areas which Spillane saw the board making improvements were in the fields of special education children, academically talented students and school maintenance.

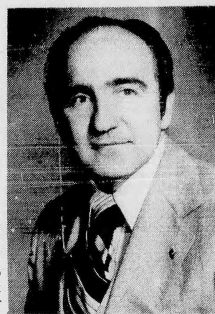
"I was very pleased to see that the board extended the Academically Talented Program to the fourth grade this past year, and that it was successful. With the extension of the Academically Talented Program, we now have children in grades 4 through 12 taking part. I would like to see the AT program extended to include all grades."

"Special Education is one of the most important aspects of the Belleville school system. Special Education allows special kids to achieve to their full potential. I believe that decisions about special education for a child should be based upon what is best for the child."

"Finally, one of the most noticeable facts about the Belleville

school system is that the physical plant was allowed to deteriorate for a

(Please see "Tom Spillane" on page 9.)



Thomas Spillane  
"Seeking Another Term"

## Joseph Biancardi, 77; Former Assemblyman

Joseph Biancardi, a former member of the New Jersey State Assembly and Belleville Board of Education, died last Saturday, Feb. 4, at the age of 77.

Mr. Biancardi served as a member of the state Assembly in Essex County from 1964 to 1968.

He served as president of the Teamsters Local 97 for many years before retiring in 1972. He had been a member of the executive board of Joint Council 73 of the International Brotherhood of Teamsters and was the administrator of the Amalgamated Welfare Funds. He had served as vice president and trustee of the Cerebral Palsy Rehabilitation Institute of New Jersey and was a trustee of the Essex County Children's Emergency Shelter.

Mr. Biancardi also served as publisher for many years of the Belleville Telegram newspaper.

He had been the chairman of the Belleville Commission on Civic Rights. In October of 1963, he was given recognition for his leadership by the Newark branch of National Association for the Advancement of Colored People. He also served on the Essex County Welfare Board from 1964 to 1965.

Mr. Biancardi was cited by the Belleville UNICO and the National UNICO as Man of the Year in April of 1966.

Mr. Biancardi had been a member of the Belleville Board of Education and the Athletic Council. He was also president of the Veteran Boys' Social Club.

He served as a member of the Knights of Columbus Council 835 of Belleville and was a Fourth Degree Knight and Faithful Navigator of the Msgr. Doane Assembly. He was an honorary citizen of Boystown of Italy and was awarded its medal of merit.

Born in Newark, he lived in Belleville for many years.

Surviving are his wife, Helen; a daughter, Mrs. Arlene Pannullo; three sisters, Mrs. Carmella Colonna, Mrs. Mary Ciccone and Mrs. Gloria Repoli; and three grandchildren.

The DeCapua Funeral Home, Newark, made the arrangements. A Mass was offered Wednesday, Feb. 8, in St. Lucy's Church. Interment was in Glendale Cemetery.

## School Ten Is Planning Fashion Show

Tickets are now available for the School 10 Home and School Association's fashion show, scheduled for Thursday, March 8 at the Fiesta on Route 17 in Woodbridge.

Tickets are priced at \$17 per person and include dinner and fashion show. The program starts at 7 p.m.

For more information call 759-3163.

## Valentine's Day Contains Much History About Life, Love, Flowers and Sweet Things

By Linda Tesesco

Next Tuesday, romantics might do well to waken before the sunrise and hurry to that special person's side.

February 14 is Valentine's Day, and according to an ancient legend, the first person one sees that day will be an eternal love.

Flowers, candy, and candlelight are the order of the day with mailboxes stuffed with pink and red envelopes containing love cards with "guess who" signatures.

"Our Valentine's Day business has increased over the years," said Michael Corino of Fountain of Flowers on Belleville Avenue.

Predictably, Corino said the romantic red rose is still the most popular Valentine's flower. Although a dozen roses for one's sweetheart can run between \$30-\$40 at Corino's shop, and even

higher elsewhere, money is no object for many Romances and a few Juliets.

"We have seen more and more women sending roses by the dozen to men," said the florist.

A famous legend about the romantic flower says that when Cleopatra received a visit from Mark Antony, she spared no expense in entertaining him. According to Margaret Jekis in "The Book of Festival Holiday," the Egyptian queen commanded that roses, 18 inches deep, be strewn on the paths where Antony would walk.

While few could afford such elaborate gestures today, the flower still remains an important part of the Valentine's tradition, possibly because the holiday is associated with ancient celebrations held in mid-February to herald the approach of springtime

and the renewal of the sweet season.

In fact, another type of sweet is closely associated with the amorous holiday. Many lovers will present their sweethearts with satin, ribbioned, heart-shaped boxes containing chocolates.

For centuries, chocolate was prized as a treat that inspired passion when eaten. In "The Chocolate Book," Helge Rubenstein notes that is why lovers tried to lure their sweethearts with the dark, luscious morsels.

The most popular Valentine's tradition, though, is the greeting card, ranging from comical to flashy contemporary designs, to the lacy, dove-covered, delight reminiscent of bygone eras.

At the Belleville Card and Gift Shop on Main Street, the old-fashioned romance card still reigns in popularity, according to

clerk Irma Ortega.

"This year though," she said, "a lot of musical cards, they have the hottest new item in greeting cards and manufactured for nearly all occasions, musical cards will serenade the receiver with a melody appropriate to the occasion."

Ranging in price from \$2 to \$7, depending upon how elaborate the design is, musical cards are like gifts in themselves.

Musical valentines feature scenes of romantic beach or woodland settings, embracing couples, or cupids and flowers.

Popular melodies include, "Strangers in the Night," "I'm In the Mood for Love," and other love ballads, both standard and contemporary.

The Belleville store reports "As Time Goes By" as the major seller this year.

"So far, most of our buyers have been women," said Ortega. "The men usually rush in at the last minute."

Legend has it that the first Valentine's greeting was sent by St. Valentine himself, whose story has little to do with lovers or romance.

Imprisoned in a Roman cell during the persecution of Christians, in ancient Rome, Valentine befriended the young daughter of the jailer.

The day before his scheduled Feb. 14 execution, Valentine sent a cheering note to the little girl and signed it "from your Valentine."

Ever since then, people have been using the same signature in sending affectionate greetings not only to sweethearts, but also to friends, parents, and just about anyone else who warms the heart.

LCD  
WATCHES

50¢ & up

Sell By Dozen

CALL:  
GEORGE

759-0759



CAMEO OPTICS

BUY  
1  
PAIR

GET  
1  
FREE

380 Main St., Belleville  
Grand Union Shopping Center  
751-4600

Another DeCarlo Sale

Sold Belleville Two Family!  
Well kept two family, 3 rooms on 1st, 4 rooms on 2nd. Fully aluminum sided. Sold by Tommye Anne Violette thru...

Ann DeCarlo

AGENCY/REALTOR  
880 BROAD ST., BROOKDALE, BLOOMFIELD  
748-5288

MEMBER

RELO

RELO Inter City  
Relocation

MAD MIKE'S COMPUTER  
SOFTWARE CENTER

ATARI BLOWOUT  
RIOT!

All Software/Hardware Brand New  
All At Or Below Cost - Cash Sales Please  
No Dealers For This Sale - All Sales Final!

EDUCATION

Early Games (ages 4-10) Corepoint 16.00 ea.  
Edufun Learning (ages 4-10) Several Titles 10.00 ea.  
Atari States & Capitals 6.00 ea.  
DataSoft - Micro Painter - 3,600 Colors! 10.00 ea.  
Atari Music Composer 13.00 ea.  
Atari My First Alphabet 12.00 ea.  
Spinnaker Titles 22.00 ea.

HOME/BUSINESS APPLICATIONS

The Bookkeeper Kit - One To Sell 150.00  
DataSoft - Text Wizard Word Processor - One To Sell 39.00  
Lighting Soft - Master Type - Tutor 17.00 ea.  
DataSoft - Color Print (MX-80 Required) 10.00 ea.  
K-Byte - K-Dos and Handbook - One To Sell 40.00

ENTERTAINMENT

Infocom - Deadline 30.00  
Infocom - Witness 30.00  
Broderbund - Serpentine 24.00  
Avalon Hill - Lords of Karma 12.00  
Avalon Hill - Voyager 1 15.00  
Avalon Hill - Planet Miners 15.00  
DataSoft - Shooting Arcade 15.00  
DataSoft - Pacific Coast Highway (Super Frogger) 15.00  
Sirius - Capture the Flag 24.00  
Sirius - Type Attack 24.00

Plus Many More Popular Titles Like  
Lode Runner, Zork, Fort Apocalypse, etc!!!  
All At Reduced Prices For This Sale!

HARDWARE

830 Modem - One To Sell - (850 interface req) \$100.00  
Telink 1 \$20.00

ACCESSORIES

Disk Files, Disks, Cables, Cleaners,  
Dust Covers and More —  
Special Order Software — No Problem  
Sale Good While Supplies Last — Don't Wait

MAD MIKE

Est. 148 Garden State Pkwy.  
237-241 Bloomfield Ave.  
Bloomfield, N.J. 743-7900  
Mon-Fri. 10-7 Sat. 10-5

# First DeWitt Savings Bank Still Offering IRA Accounts

One of the biggest stimulants to saving over the past two years has been the Individual Retirement Account, popularly known as the IRA, according to John P. Dailey, chairman, and Henrik Tvedt, president of First DeWitt Savings.

"Enthusiasm for the plan developed rapidly when all individual wage earners became eligible for IRAs at the start of 1982 and savers realized the tax savings that the plan offered together with the opportunity to accumulate funds toward retirement in a relatively painless way," the two officers stated.

"Nationally in 1983 alone," Tvedt said, "savers set aside over \$32 billion toward retirement and at the same time were able to reduce their income burden."


"The IRA is one of the best tax shelters ever devised. The deduction that a saver is eligible for each year adds up to a very significant tax savings. An individual or a family can keep more of their hard-earned money for themselves. And an IRA can grow steadily and quickly from a base of \$2,000 of tens of thousands when maintained as an annual program," Tvedt continued.

"For instance, each year an individual can deposit up to \$2,000 in an IRA account or a working couple can deposit up to \$4,000 and pay no taxes on the amount deposited or the interest it earns until retirement when presumably most people will be in a much lower tax bracket. The advantages are tax savings now, and the accumulation of funds in a tax-sheltered nest egg for retirement," said Tvedt.

Dailey explained that right now is a good time to start because until April 15, a saver who opens an IRA can still claim a deduction for 1983. Dailey also pointed out that while the IRA is for every individual wage earner, there are many affluent people who have not taken advantage of the government's largesse. This is unfortunate he said because of the substantial tax savings available.

According to Tvedt, First DeWitt offers a variety of IRA's, makes it simple to open the account, and pays a very high interest, higher than other non-IRA savings plans.

Tvedt suggested that interested savers looking for an appropriate tax shelter stop in at any of the association's seven offices and get the details on IRA accounts. Any First DeWitt officer will be happy to offer professional guidance to help a saver enjoy the advantages of tax deferral together with the initiation of a retirement plan.



Thur. Fri. Sat. Sun. Mon. Specials  
February 9 thru February 13

1/2 lb. HOT REAL JEWISH CORNED BEEF ..... \$2<sup>24</sup>

1/2 lb. HORMEL HARD SALAMI ..... \$1<sup>79</sup>

1/2 lb. THUMANN'S GERMAN BOLOGNA ..... \$1<sup>28</sup>

1 lb. LEAN DOMESTIC BOILED HAM ..... \$2<sup>19</sup>  
(Min. 1 lb.)

Have Lunch With Us...  
Free Coffee With Lunch 11:30a.m.-2:30p.m.  
Open 7 days a week till 10:00 P.M.

**Towne** 751-3935  
**DELICATESSEN & CATERERS**  
650 JORALEMON ST.  
Cor. Franklin Ave., Belleville  
Member of Belleville Chamber of Commerce

## Income Tax Tips

## Dear H & R Block

Q. Our mentally retarded son requires "patterning" exercises. Can we deduct what we pay the people who do these with him even though they are not doctors or nurses? S.P., Newark.

A. Whatever amounts you pay for patterning can be combined with your other medical expenses on Schedule A when you itemize deductions.

Q. What is the purpose of this new Schedule W? A.C., Glen Ridge.

A. When both marriage partners work, their combined incomes put them in a higher tax bracket and result in a greater tax than if they both were single. This has become known as the "marriage penalty." Schedule W is an attempt to alleviate this situation. It allows you to calculate 10 percent of the lower earnings (up to \$3,000) and exclude that amount from tax.

Q. For many years we have been reinvesting our dividends in a public utility stock into additional shares, but we always were taxed on the amount received anyhow. Is it true that we won't be taxed on those dividends? E.L., Clifton.

A. It is true that you can exclude \$750 per person from tax on reinvestments in certain public utility stocks. Bear in mind, however, that such stock will carry a zero cost basis. If you sell it in less than a year the entire proceeds will be ordinary income. If it is held more than a year the entire proceeds are long term capital gains.

Q. Do I have to show the interest

from my All-Savers on my tax return since it's under the \$1,000 limit. Also, do I have to pay New Jersey tax on it? R.N., West Orange.

A. You must show the All-Savers interest on a Schedule B, attached to a long form, even if it is not taxable. This year the New Jersey forms ask you to enter total interest, then subtract out any qualifying All-Savers, so here again you must show it even though it is not taxable.

GIVE  
THE AX!

WITH FIRST DeWITT's  
**High Rate IRA\***

\*Individual Retirement Account

**You cut taxes and SAVE!**  
**You get a HIGHER RETURN on savings**  
**Your funds increase FAST**  
**You get total SECURITY!**  
**And you retire with a BUNDLE!**

OPEN AN IRA NOW AND SAVE ON 1983 INCOME TAXES


GET ALL THE FACTS FROM

**FIRST**  
**DeWITT SAVINGS**  
AND LOAN ASSOCIATION

6 OFFICES IN YOUR OWN BACKYARD!  
BELLEVILLE • BLOOMFIELD & CEDAR GROVE

TELEPHONE **751-2800** ALL OFFICES

Pharmacy  
Footnotes



Vincent Cozzarelli  
Reg. Ph.

Vaccination was first used in the late eighteenth century by Dr. Edward Jenner. Dr. Jenner noticed that milkmaids, who frequently came down with cowpox, seemed protected against smallpox, a similar but much more devastating disease. Jenner concluded that exposure to cowpox somehow shielded the women against the more serious disease. He tested his theory by making the first vaccine. The substance that he used came from the cowpox ulcers on the milkmaids' hands. The process took its name from the Latin word for cow, "vacca." People inoculated with this substance did not get smallpox. Since 1980 smallpox has been declared eradicated.

People have been using our services for many years. For all your prescription needs, come to ROSSMORE PHARMACY, 338 Washington Ave., 759-1956, 759-1968. Our stocks include cosmetics, toiletries, greeting cards, Russell Stover candies and gift items for all occasions including Valentine's Day. "Your Doctor Knows Us-Four Doctor Trusts Us." Open Daily 9am-10pm, Sundays 9am-9pm.

**HANDY HINT:**  
Consult your doctor about vaccinations if you are pregnant.

## DiMaggio Wants Academic Standards Maintained

# Belleville Principal Seeking Nutley School Board Seat

Mario DiMaggio, principal of the Belleville Middle School, has announced that he is a candidate for the Nutley School Board election scheduled for April 3.

A resident of Nutley for 20 years and a member of the Belleville school system since 1953, DiMaggio says he is running to ensure that Nutley's high academic standards are maintained, and that mediocrity does not set in.

"In Nutley, we have been fortunate in having a very good school system, headed by competent administrators and teachers," DiMaggio said. But he suggested that the overall stability of the Nutley community is directly linked to the local educational program.

"More effective schools must be realized by the better utilization of existing resources, the motivation of all concerned and the goodwill of the

general public," he added.

DiMaggio said he was approached four years ago by friends encouraging him to seek a seat on the Board of Education, but he chose not to run at the time.

"During that time I had a number of outside activities to be dealt with and I felt I did not have the time to sit on the board," he said. "I was in the middle of changing the Belleville Junior High School into a middle school. And there were also family commitments. My youngest child was in second grade and I felt I needed to spend as much time with my family as possible. But now things have tied together and I am ready to seek election to the School Board."

DiMaggio entered the Belleville school system back in 1953 as a math teacher at the high school. Six years later he was named chairman of the high school's math department. In 1960 he became the first director of the Belleville summer school program and in 1964 was named vice principal of the junior high school. Finally in 1973 he was appointed by the Belleville School Board as principal of the junior high school, a post he currently still maintains.

A graduate of Montclair State College with an M.A. in mathematics, DiMaggio has done graduate work at Rutgers Univer-

sity, Rensselaer University and the University of Massachusetts. He is involved in educational organizations including holding office with the local, county and state principals' associations. He is a former presi-



**Mario DiMaggio**  
Seeking Board of Education Seat

dent of the Holy Family Board of Education.

DiMaggio is one of five candidates seeking four open seats on the Nutley Board of Education. If elected he would be the third educator on the Nutley board.

## Belleville Sub-Juniors Presenting Slide Show

"The Life of Mr. Newspaper," an environmental slide program will be presented by the Belleville Sub-Juniors at the Belleville Public Library on Friday, Feb. 24 at 10 a.m. in the Children's Room of the main branch, 221 Washington Ave.

This show culminates a week long festival of activities during the winter vacation week at the library.

Stressing the importance of the environment, the program will follow the sequence of events in the life of a newspaper. The children will be given stickers, buttons and coloring books to take home. The presentation is open to youngsters from pre-school age to sixth grade.

The Belleville Subs regularly recycle newspapers and would appreciate the children who attend the program to participate by bringing a bag of old newspapers for recycling.

So combine fun with learning and plan to attend the Feb. 24 slide program of the "Life of Mr. Newspaper" at the Belleville Public Library.

The Belleville Sub-Juniors are members of the General Federation of Women's Club. This is a service organization for young women from ages 12 to 18. The next meeting of the club is Monday, Feb. 12 at 7 p.m. at the Woman's Club of Belleville, 51 Rossmore Place. For further information contact club president Tricia Spillane, 759-9288.

## HEALTH WISE



**By Ralph J. DiMaio D.C.**  
The human body has four major excretory systems that rid the body of constantly accumulating poisons. These are the kidneys, lungs, intestines and skin.

If any of these fails to perform efficiently, the body may warn us with symptoms of a cold. Actually, the nose, throat or bronchial tubes become congested and inflamed while trying to fill in for the malfunctioning excretory system.

Chiropractic treats adds by locating and correcting the spinal misalignment which is responsible for the failure of the malfunctioning system. When nerve energy flows freely, the body functions normally in a healthy manner.

**DR. RALPH J. DI MAIO**  
Chiropractor  
625 Joramelon St. Belleville 751-8805

## The All New "Fully Brushless"

# MR. FOAMY CAR WASH

Our Full Service Includes:

- Exterior Wash
- Interior Cleaned
- Vacuum Front & Rear
- Undercarriage flushed & washed
- Inside Windows Washed
- Hot Wax
- Front & Rear Mats

All At **NO EXTRA CHARGE**

**FREE**  
1 litre **BOTTLE of COKE!**  
With every full service car wash or purchase of polish wax

## FREE Polish Wax

Value \$2.00 with coupon  
Coupon expires March 1, 1984

**9-11 Franklin St.**  
**Belleville 759-3966**

(Near Franklin Ave.)  
Hrs. 8:30 to 5:30

— People Go Out Of Their Way —



IRA

**NEW**  
Steam Bath  
For Better Cleaning



Hot  
Steam  
Is  
Back



BETTY

# We're The Best BRUSHLESS CARWASH OR YOUR MONEY BACK

— GET RID OF THE SALT —

- Interior Vacuum & Perfect Windows **FREE**
- Polish Wax — Car Polished Automatically (Reg. \$3.00 Extra) **FREE**
- Underwash — Flushes & Protects Undercarriage (Reg. \$1.50 Extra) **FREE**
- Steam Bath — Bumpers, Lower Panels, Chrome, Whitewalls & Hub Caps Steam Cleaned **FREE**

**\$5.61** + tax

(No extra charges)

## TIP-TOP CAR WASH

485 Ridge Rd. No. Arlington, N.J. 991-3629

Use Belleville Pike to Ridge Rd. Turn left to Tip-Top  
Open 7 Days A Week - Sunday Til 1:30 P.M.

**Karin,**  
**I'll Love You**  
**4 EVER!!**

Happy  
Valentine's Day



## All IRAs Are Not Created Equal.

Plan For Tomorrow Today

All IRAs are not the same. An IRA from Fidelity & Guaranty Life provides all of the well-publicized benefits of tax-deferred retirement planning and more.

Our IRA may include a disability feature that guarantees to increase your IRA's value even if you become disabled. If you are ever seriously disabled for six months or more, payments equal to the average annual premium paid for the three years preceding will be made by us. Your annual balance continues to grow just as if you were making the payments yourself.

Why take a chance on your retirement funds? Our disability provision is an important benefit — one that banks and savings & loans cannot offer. It eliminates the possibility of an unfortunate disability forcing your retirement nest egg to come up short.

Build for tomorrow today — confident that your IRA will continue to grow even if you're disabled — with an IRA from Fidelity & Guaranty Life.

Don't hesitate. Call now for more information.

\$2,000 ANNUAL CONTRIBUTION* TO AGE 65 — 10% INTEREST		
Age	Contribution*	Accumulation**
25	\$80,000	\$97,3,704
35	60,000	361,886
40	50,000	216,364
45	40,000	126,004
50	30,000	69,990
55	20,000	35,062

\* State tax, if any, and disability benefit cost not considered.

\*\* 10% Interest compounded annually for illustration purposes — not guaranteed for the future.

The current annual interest is 11%. For more information call us.

*Generazio associates, inc.*

265 Broad St.  
Bloomfield, N.J. 07003

USF&G  
INSURANCE

(201) 429-8100

PIA  
FIDELITY & GUARANTY

## VALENTINE GIFTS

From  
**ROSSMORE PHARMACY**

"The Valentine King"

THE SWEETEST OF GIFTS  
*valentine candy*

From

*Russell Stover*

1 lb. to 5 lb.  
Red Foil Hearts  
Satin Hearts  
Assorted Chocolates

Also: A Complete Line of Candy Cupboard & Perugina Candies in 1 to 5 lb. boxes.

Plus Many Other Gift Items  
Including:

NOVELTIES  
PLUSH ANIMALS  
CARDS

Stop By And See The Largest Selection In Town  
At

**ROSSMORE PHARMACY**

338 Washington Ave. Belleville 759-1956



# The Belleville Times



Published every Thursday.  
The Times concerns itself  
with printing information  
with the best interest of  
the residents of Belleville.  
Telephone: (201) 759-3200

**Publisher**  
FRANK A. ORECHIO  
**Editor**  
EDMUND CAPPARUCCI  
**Social Editor**  
HELEN MAGUIRE  
**Advertising Coordinator**  
CELESTE FEDERICO  
**Production Manager**  
DAVID SALATA  
**Annual Subscriptions:**  
Regular: \$12 Senior Citizens: \$7  
To Subscribe call 759-3200

## Sheriff Thomas D'Alessio

Sheriff Thomas J. D'Alessio has just released a report on his one-year leadership of the important post to which the citizens elected him November 1982.

D'Alessio's accomplishments are very impressive. His approach to law enforcement has been unique. For instance, he has established a program bringing Essex County juveniles to Rahway State Prison for an opportunity to speak to inmates who hopefully will induce the youngsters that crime doesn't pay. D'Alessio has established an innovative rape prevention program, drug and alcohol awareness programs for school administrators.

He has established a program fingerprinting children with the objective of assisting law enforcement agencies to locate missing and runaway children. To date more than 12,000 children have been fingerprinted. This program costs parents nothing, but contributes much comfort to their lives.

D'Alessio emphasizes the philosophy that drives him to innovate and educate — "the better educated the public is, the better equipped it is to confront the problems in today's society."

On the administrative side, D'Alessio had departed from the old-fashioned political approaches. He has strongly supported affirmative action hiring which should make a major contribution to improve relations with the minority in the City of Newark — the seat of his operations.

Even Essex County Executive Peter Shapiro commends D'Alessio on his affirmative action program and the nonsense approach that D'Alessio has brought to the administration of the office of the sheriff. Shapiro publicly acknowledges that under D'Alessio the Sheriff's Office is no longer politically motivated — a development most people never expected.

One would think that D'Alessio's accomplishments over the last 12 months would lead to the support of his programs by fellow Democrat Peter Shapiro, an Essex County Executive. For a reason that isn't apparent to us laypeople, the County Executive is seeking to cut the Sheriff's budget — this despite the fact the Sheriff returned to the county \$300,000 — a remarkable achievement by any measure.

The Sheriff's Office is the only law enforcement agency in Essex County that is constantly making war on narcotics traffic through its Bureau of Narcotics. With the assistance of the Prosecutor's Office and other law enforcement agencies, D'Alessio's Bureau of Narcotics has caused more arrests in major area drug deals and confiscated more contraband than any predecessor.

D'Alessio is also requesting the establishment of a bomb squad. In these uncertain days of terrorist activities, one would think that a bomb squad would already be in existence for the County of Essex. Not so. Sheriff D'Alessio wants to correct this omission — he has the support of the Essex County Board of Freeholders and funds should be granted to accomplish this objective. In 1983 alone there were 15 bomb scares in Essex County. In 1984 we expect a doubling of this number.

An expression of public gratitude to Sheriff D'Alessio for a job well done is quite in order. If the next two years of his three-year term are as productive as the past year, D'Alessio may be returned to his job by acclamation.

*Frank A. Orechio*

## Prayer For Today

### The Man in the Mirror

When you get what you want in your struggle for self  
And you think you are king for a day,  
Just go to the mirror and look at yourself,  
And see what that man has to say.  
For it isn't your father or mother or wife  
Who's judgement upon you must pass,  
The fellow whose verdict counts most in your life  
Is the one staring back from the glass.  
He's the fellow who counts — never mind all the rest,  
For he's with you clear up to the end.  
And you've passed your most dangerous, difficult test  
If the man in the glass is your friend.  
You may fool the whole world down the pathway of life  
And get pats on your back as you pass,  
But your final reward will be heartache and tears  
If you cheated the man in the glass.

Emilio Guglicello

## Letters in Print

# Illegal Apartment Creates Problems

To the editor:

I am writing this letter hoping for some results since trying to talk to Ben Platt, building inspector of Trenton, Bob Dominick, building inspector of Belleville, the Belleville Police, Thomas Luongo of the health department, the Mayor of Belleville, and many others. But no one has an answer.

I have been living at 349 Ralph St. in Belleville, with my husband and four children, on the third floor for three and a half years. We went to Barbetta Realtor who found the apartment for us. Now we are told the apartment is illegal.

On Sept. 9, 1983, I called the building department of Belleville because my outlets were getting hot and sparking and fuses were blowing out. Mr. DeLorenzo came to my apartment and told me my apartment was illegal due to low ceilings, not enough ventilation, exposed wiring, electrical

problems, constantly, and plumbing, and I would have to make plans to move as soon as possible.

Now the date is Jan. 30, 1984 and we are still living in this illegal apartment, having been told in court to vacate apartment by Feb. 29. We have no place to move since people do not want to rent to couples with four children, and we can not afford to buy a house at this time.

I called Barbetta Realtor of Belleville since they were the people who rented out this illegal apartment to us and now they do not want to get involved, not even offering to help find us another apartment.

Tell me — is this fair? Thank you for your time hoping something could be done.

Sincerely yours,  
Mrs. Suzanne Burke  
349 Ralph St.  
Belleville

## Italian-American Member Upset Over 'Gang' Label

I would like to respond to a recent column by Jim Golden, that focused on a past presidential election of the Italian-American Club. In that column, Mr. Golden referred to remarks by the newly elected president who labeled those dissenting voters against his candidacy as "the gang of 17."

That remark insults the very integrity of this country and all it stands for. I would refer the gentleman in question, to the Constitution of the United States that gives us the right to vote for or against any candidate without fear of reprisal or labels.

The last time I heard the term "gang of 17" was during the Chinese trials of a former Chinese premier's widow and two of her political cohorts. Then, they were being referred to in the communist press as the "gang of three." All we did Mr. Albanese, was to vote our choice. We exercised a right that was paid for in blood, sweat, and sacrifice for over 200

years. I would remind Mr. Albanese that is the reason our ancestors left their native shores many years ago and pursued the freedom offered by this beautiful country of ours. Your reference to the "gang of 17" Chris, is an insult to everything this country stands for.

I have never heard a past president of our country, who upon losing an election, refer to those who voted against him as the gang of several million. Did you, Mr. Albanese, refer to those who voted against you in your last political bid for town councilman, as the "gang of 3,600" because only 400 voted for you.

I feel at this time, that the dissention and embarrassment caused by your unfortunate reference, can only be corrected by your immediate resignation.

Jackie Rega  
214 Belleville Ave.  
Belleville

## Strumolo's Appointment Receives Some Backing

To the editor:

As a past candidate for commissioner in the May 1983 election, I was taken back by the plans of Commissioner Matthew Pica to call it quits.

Now there is talk to keep his seat vacant until a November election. March 1 until Nov. 8 is a long time to have a department without an acting head. Now the question is who to fill the seat with. I think the best choice is the ex-commissioner Vincent Strumolo. He has 19 years on the job, he did come in sixth, only 117 votes behind Commissioner Pica in the last race, he ran a clean race and he is still very well liked. If I was an elected commissioner, for the sake of the town and not to burden any other commissioner with two

departments, I would vote to let Mr. Strumolo fill the seat, but this is my opinion. Now in November there will be an election to fill the seat if Mr. Strumolo is not appointed. I know he'll run. I have sat with my civic association and talked about a run for the seat in November myself, and we have decided to run in 1987 when I have a better insight to town affairs. I am now endorsing Mr. Vincent Strumolo for election in the November election. I will give my support of 110 percent to elect Mr. Strumolo back to the Board of Commissioners. I encourage all my supporters to consider your vote to him.

Sincerely,  
Kevin G. Kennedy

## Township Bulletin Board

### THURSDAY, FEB. 9

10-10:45 a.m. Preschool for Children — Belleville Public Library, 221 Washington Ave. Registration is required.

10-10:45 a.m. "Abstract Art" will be taught. — Belleville library

1 p.m. Senior Citizens Club sponsored by Essex County Department of Parks. — Belleville Ave. in the park.

6:30 p.m. Kiwanis Club supper meeting. — San Carlo Restaurant, 620 Stuyvesant Ave., Lyndhurst.

6:30 p.m. Belleville Chapter of Optimist International. — Branch Brook Manor, 13 Washington Ave.

7:30 p.m. BHS girls' basketball vs. Bayonne, away.

7:30 p.m. Planning Board meeting. — 383 Washington Ave.

V.F.W. Aux. 275 meeting at the Veteran's Hall at 17 Belleville Ave.

7:30 p.m. Varsity Club meeting. — Belleville High School cafeteria

8 p.m. Belleville Fire Dept. Ladies' Auxiliary meeting. — Recreation House, 407 Joramemon St.  
8:30 p.m. Al-Anon meeting for relatives of alcoholics. New members should arrive at 8. For information, call 672-7231. — Wesley Methodist Church, 225 Washington Ave.

### FRIDAY, FEB. 10

1 p.m. Belleville Senior Citizens' Social Club meeting. — Recreation House, Franklin Avenue at Mill Street.

1 p.m. Belleville Chapter 2051 American Association of Retired Persons official board meeting. — Lewistown Presbyterian Church, 444 Union Ave.

3:54 p.m. Valentine Day Handicraft. — Silver Lake branch library, 30 Magnolia St.

6:30 p.m. BHS girls' J.V. basketball vs. Ridgewood, home.

(Please see "Community" on page 14.)

## OBC-TV Program Listings

Channel 36 - North Jersey  
Program Descriptions

**OBC-TV News** — The week ahead should reveal specifics regarding local taxes and the school budget. OBC-TV will also be in Newark to get updates on the county tax rate this week. The countdown nears in board of education races as well. Kim Kosko and Phil White anchor this report telecast 14 times daily.

**NINE ON THE TOWN** — A new name for Nutley High's weekly television production by students of the media workshop.

**OUR TOWN** — Guest to be announced.

**CLASSIFIED INFORMATION** — Seen Wednesday afternoons, this data service previews selected want-ads from the next day's area weekly newspapers.

**SPORTS PRO** — Professional wrestler Larry Zbyszko is profiled by host Steve Rothstein.

**NIGHTOWL** — Overnight data service. Local headlines, weather, community announcements.

### Thursday, February 9

9 a.m. OBC-TV News (to noon)  
4:30 p.m. Sports Pro  
5 p.m. OBC News (live) to 9 p.m.  
9 p.m. Our Town  
11 p.m. OBC-TV News — Local  
11:30 p.m. OBC Nightowl

### Friday, February 10

9 a.m. OBC-TV News (to 12 noon)  
12 p.m. Sports Pro  
4 p.m. Our Town  
4:30 p.m. Nine on the Town  
5 p.m. OBC-TV News (live) to 9 p.m.  
9 p.m. Nine on the Town  
11 p.m. OBC News

### Saturday, February 11

9 a.m. OBC News — to 12 noon

### Monday, February 13

9 a.m. OBC News (to 12 noon)  
12 p.m. Data Service — Town announcements  
4:30 p.m. Nine on the Town  
5 p.m. OBC News (live) to 9 p.m.  
9 p.m. Our Town  
11 p.m. OBC-TV News — Local  
11:30 p.m. Nightowl Service

### Tuesday, February 14

9 a.m. OBC-TV News — Local to noon  
12 p.m. Sports Pro  
1 p.m. Our Town  
5 p.m. OBC-TV News (live) to 9 p.m.  
9 p.m. Sports Pro — S. Rothstein  
10 p.m. Our Town  
11 p.m. OBC News — Local reports  
11:30 p.m. Nightowl (to 9 a.m.)

### Wednesday, February 15

9 a.m. OBC-TV News  
12 p.m. Classified Information  
4 p.m. Sports Pro  
4:30 p.m. Nine on the Town  
5 p.m. OBC-TV News (live) to 9 p.m.  
9 p.m. Sports Pro  
11 p.m. OBC News (local)  
(TV schedules subject to change)

### SHERIFF'S SALE

SUPERIOR (CHANG) A-44  
SUPERIOR COURT OF NEW  
JERSEY, CHANCERY DIVISION,  
ESSEX COUNTY, DOCKET NO.  
F-4383-83 — BANKER'S  
MORTGAGE CORPORATION,  
PLAINTIFF vs. ROBERT CARRE,  
et al. DEFENDANTS, Execution For  
Sale of Movable Premises.

By virtue of the above stated  
writ of Execution, to be directed,  
I shall expose for sale by Public  
Auction, in SHERIFF'S OFFICE,  
Essex County Courts Building in  
Newark, on Tuesday, the 28th  
day of March next, at one-thirty  
P.M. (Prevaling Time),  
Municipality of City of East  
Orange, County of Essex.

Street address, 292 North  
Park Street.

Tax Lot and Block Lot 21,  
Block 905

Approximate dimensions 45'  
x 101'

Nearest cross street: Fair  
Street 140'

A Full Legal description can  
be found in the Office of the  
Register of Essex County in  
Mortgage Book 4824, Page 757.

The approximate amount of  
the judgment to be satisfied by  
sale is the sum of THIRTY-  
SIX THOUSAND FOUR  
HUNDRED EIGHTY SEVEN DOL-  
LARS AND FORTY CENTS  
(\$36,487.40), together with the  
costs of this sale.

The Sheriff reserves the right  
to adjourn the sale from time to  
time as provided by law.

Newark, N.J. January 30, 1984

THOMAS J. DALESSIO, Sheriff

Alvin D. Miller, Attorney

The Belleville Times

Feb. 9, 1984

March 1, 1984

Fee: \$60.96

No. 884-42

### Letter policy

The Times continues to receive letters on a variety of topics which, unfortunately, may never find their way into our editorial page. That is because they are unsigned.

As a matter of policy, The Times accepts only signed letters. "Signatures" such as "A Concerned Citizen" or "A Worried Parent" will not do. Only names will suffice. However, we will withhold names from publication upon request.



# MEET THE MERCHANTS



## O' Betsy Auto Repair

504 Washington Ave., Belleville 759-5561

Tedd Ellis (owner) has been repairing automobiles professionally for over 25 years. He has been in Belleville since 1970 and is a N.J.A.S.E. certified auto technician. He has passed the federal emission systems diagnosis course.

O' Betsy Auto Repair was founded by Tedd over 3 years ago to bring to Belleville a small garage where you could bring your problems in and receive quality repair and personal service. No job is too small! He specializes in brakes and electronic tune-ups but does all types of other repair work like shocks-exhaust-air conditioning-lubrication-"Pennzoil" oil changes-flats-batteries-alternators-starters-on both American and foreign cars.



## Christines Jeans

145 Washington Ave., Belleville 751-5405

Christine is the new kid on the block, being open just over a month now. They offer a large selection of fashion jeans and sportswear from just about every major designer. One unique aspect of Christines Jean's is their ability, through their large distributor network, to order for their customer's almost any designer name, style, and size and have the item within a week.

Christines is open Monday thru Saturday, 10 a.m.-6 p.m. Stop in and browse. We're sure you'll enjoy our selection.



## Gymnastic World, Inc.

263 Hillside Ave., Nutley, N.J.

Pictured above are the Gymnastic World, Inc. USGF Class III team of which 6 of these girls have already qualified for states with extreme high rankings.

G.W.I. opened their new 6,000 sq. ft. complete Gymnastic facilities only 4 months ago but are already established as one of the most outstanding clubs in N.J.

The next session begins Feb. 6 for 1 yr. olds thru adults program. A boys team has also been established at their gym at 263 Hillside Ave., Nutley, N.J.



## V. Sylvestro's Garden Market

166 Garden Ave., Belleville 759-1069

For the widest selection of consistently high quality meats, the only place to go is Vito Sylvestro's Meat Market, 166 Garden Ave., Belleville.

The work done by expert butchers has won patronage for the store over a wide area of North Jersey. Vito Sylvestro is known for its great volume of business, and up-to-date buying and inventory methods which have consistently favored the Meat Market with the highest quality of U.S. inspected meats of fine flavor and tenderness and all at reasonable prices.

Sylvestro's also can take quarters and halves of beef and trim and prepare individual cuts wrapped for your home freezer.

If you're bored with the meats you buy in supermarkets, see us for the freshest meat, poultry or fish. We guarantee freshness.



## For Pete's Sake Eat & Drink

153-157 Belleville Ave., Belleville 759-1516

For Pete's Sake Eat & Drink, the home of the overstuffed deli sandwich.

Pete Vacarelli, proprietor, has made this establishment probably the most popular lounge in this area. Quite different from your average shot & beer place, Pete's surrounds you with a friendly, warm atmosphere offering specials daily and on Tuesdays his seafood extravaganza featuring, shrimp cocktail, fried calamari, shrimp orreganato, scungilli salad and a variety of other delectables to choose from. All very moderately priced. Dinner specials are offered every evening. Stop by for lunch, dinner or just a sociable drink. We'll be happy to serve you.

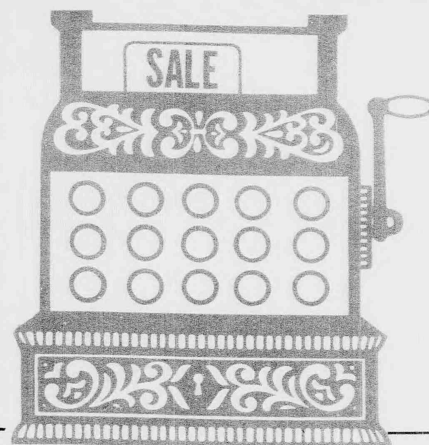


(L-R) Maria - Rose - Trudy

## Meyer's Bakery & Cafe

We would like to introduce you to Meyer's Bakery & Cafe in Nutley featuring a full line of everyday fresh baked goods. Enjoy a European touch at our cafe, for breakfast, lunch, or dinner. Stop by for a delicious cappuccino and home made pastries. We are happy to serve you 7 days a week in our 3 locations.

227 Franklin Ave. - Nutley  
382 Washington Ave. - Belleville  
919 Franklin Ave. - Newark



# MEET THE MERCHANTS

A Special Advertising Supplement to  
The Nutley Sun • The Belleville Times  
Bloomfield LIFE  
February 9, 1984



## Head Over Heels Haircutting Saloon

153 Washington Ave., Belleville 751-9781

Head Over Heels Haircutting Saloon has been in Belleville for 1½ years. Specializing in precision cuts for men, women and children, their fine staff of haircutting experts will comply to any of the newest styles and fashion cuts. Toni and Joanne would like to introduce to you their new line of Cellophane Colors By Sebastian, the newest line of colors to bring back the natural shine that nature has taken out. If you're bored with your old look we have the right look for you! Call today for an appointment. 751-9781.



## Jovial Card & Gift Shoppe

143 Washington Ave., Belleville 751-6787

Come browse through a wide variety of cards and unusual gifts from around the world. Jovial takes pride in offering eight different lines of cards. Special cards represented by Gordon Fraser, Renaissance, Tiber Press, to name just a few. "A card can express so many of your thoughts and feelings without having to come out and say it in so many words," says owner Virginia Ng.

The shoppe also offers a complete line of wedding invitations, decorations, bridal accessories, and personalized wedding and shower favors. Rental of wishing well and umbrellas are also available.



(L-R) Lynn, Ricky, Diana

## Nutley Buy-Rite

558 Franklin Ave., Nutley, N.J. 667-1315

We Deliver  
N.J. Lottery Tickets Available  
Pick-It, Pick 4 & 6, & Instant Games

Parking in rear of store  
(off Dodd St.)

Shop at Nutley Buy-Rite for the best selection in imported and domestic wines, spirits and beers. We carry a full line of cold champagnes.

Stop in and let our staff help you in selecting that complimentary wine for that meal or party. Be wise and Buy-Rite where the prices are the best!



## John Hancock Insurance Company

66 Mount Prospect Avenue, Building C, Clifton, N.J. 07013  
(201) 473-6500

John Hancock offers a wide range of insurance and investment programs including life, health, property and casualty, mutual funds and IRA's. We can also set up pension and profit sharing plans for you and your company. We can even set up a variable life or variable annuity program for you and your family.

One or more of these products could be of interest to you. Call today for more information at 473-6500, or write to Thomas McGlynn c/o John Hancock Companies, 66 Mount Prospect Ave., Building C, Clifton, N.J. 07013. We can help you here and now, not just hereafter.

# MEET THE MERCHANTS



## Charles Jewelers

163 Washington Ave. Belleville 759-2468  
(Opposite Town Hall)

Why would people seeking a small loan visit Charles Jewelers at 163 Washington Ave., in Belleville?

Surprisingly, besides having one of the largest and most unusual selections of jewelry and gold items anywhere, Charles Jewelers is also one of the leading Pawnbrokers in New Jersey.

Of course, most people visit Charles Jewelers, which is opposite Belleville Town Hall, because of its expert staff of professionals, knowledgeable in every aspect of the craft.

"We also offer expert repair service on jewelry and watches," Mr. Cicienia stresses.

Cicienia personally has more than 28 years' experience and is widely known throughout New Jersey.



## Maytag Home Style Laundry

300 Washington Ave. Belleville

A different and improved way to wash and dry the family laundry is available in this area with the opening of the Belleville Maytag Home Style Laundry, a Maytag-equipped, self-service laundry located at 300 Washington Ave.

The laundry represents a departure from self-service stores of the past. Instead of large, multiloop commercial dryers and multicontrol washers, the Belleville Maytag Home Style Laundry features a bank of 24 stacked, single-load dryers against one wall and 24 energy-efficient washers, arranged attractively and efficiently in small, semi-private clusters with folding tables.

An attendant is on duty to provide customer assistance and answer questions. For those who wish the attendant to handle their laundry, drop-off service is available.

# MEET THE MERCHANTS



## Marquee Lounge

20 Orange Street, Bloomfield, N.J. 07003 (201) 429-1895

The Marquee Lounge, on the corner of Willow and Orange Streets, in Bloomfield, is actually two places in one. Upstairs is a casual pub-type atmosphere which serves food and drinks.

Downstairs is owner Shorty Cross' pride and joy. Besides a spacious dance floor, it is a room decorated with red plush carpeting and intimate lighting to enhance the winning, dining and dancing experience. Well-known live band perform downstairs.

The Marquee Lounge is open from 8 p.m.-2 a.m. and also for lunch from 11 a.m.-3. Visit the Marquee Lounge for a unique and enjoyable experience.



## H & R Block

155 Franklin Ave. Nutley

H & R Block's Nutley office has served clients since 1969, as one of the first Block offices in New Jersey. Bert Tobia, who started in the Nutley office as a tax return preparer, has been District Manager for twelve years. Ruth Ann Ciallolla, office supervisor for the past seven years, has eleven years' experience in preparing both federal and state returns. The office is located at 155 Franklin Ave., Nutley. Hours are 9 a.m. to 9 p.m. Monday thru Friday, and 9 a.m. to 5 p.m. on Saturday and Sunday.



## Gencarelli's Bakery

380 Broad Street, Bloomfield, N.J. 07003 (201) 743-1480

Well-known for their delicious baked goods is Gencarelli's Bakery. The minute you walk through the doors, the smell of fresh baked desserts, breads and pastries arouses your senses.

Gencarelli's Bakery has a wide variety of tempting tastes including butter cookies, Italian pastries, pies and layer cakes. They also have fresh baked rolls and breads.

Stop by their store at 380 Broad Street, Bloomfield, for friendly and courteous service and a dessert selection that could satisfy anybody's sweet tooth.



## Mazzella's Florist

33-35 Franklin Street, Bloomfield, N.J. 07003 (201) 743-2921

Donald DeLuca, the new owner of Mazzella's Florist, formerly of Walter's of Nutley, invites you to come and see the wide variety of flowers and plants in his store.

All of his employees have at least fifteen years experience and it shows in the quality of their work. Mazzella's specializes in flowers for weddings and funerals. They have free delivery and a wire service available.

Visit them at 33-35 Franklin Street in Bloomfield.

Pictured from left to right: Mark Bizzarro, Hilda Klemovitch, Proprietor, Donald DeLuca, Susan Smargiassi

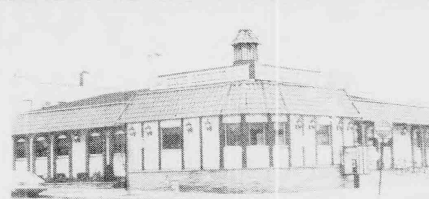


## Towne Delicatessen & Caterers

650 Joralemon St. Belleville

Towne Deli has been serving the community of Belleville for 21 years. Starting out as a take out deli, Towne has become a luncheon restaurant serving over 70 different varieties of overstuffed sandwiches & hoagies. Their extensive selection of fine delicatessen meats include hot corned beef, hot pastrami, homecooked roast beef & Virginia hams. Plus a variety of homemade salads. Their hot & cold catering service ranges from large weddings to birthday parties.

Towne is also the originator of "The Weekend Specials." Howard Halpern, owner, takes pride in serving the people of Belleville which accounts for why he is the newly elected President of the Chamber of Commerce.



## Willie's Diner

9 State Street, Bloomfield, N.J. 07003 (201) 748-7414

The Ramundo family takes great pride in the care and preparation of a wide variety of dishes served at Willie's Diner.

Along with delicious seafood and appetizers, Willie's Diner also offers a tasty salad bar. A daily businessman's lunch is also available. All of the baking of their delicious desserts is done on the premises.

Willie's Diner is open 24 hours a day, seven days a week. The Ramundo family thanks you for your continued patronage.



Bob Ciccolini

The new look in Nutley is the Eight Ciccolini Brothers who represent a 50 year

third generation business selling quality home furnishings and appliances at great prices!

Look For Us On OBC Cable News Channel 36W  
the eight ciccolini brothers  
furniture and appliances

537 Franklin Ave. Nutley, N.J. 07110-661-2100



## Blue Ribbon Wallpaper, Inc.

553 Franklin Ave., Nutley, N.J. 667-2727 - 667-1945

Let us assist you in your decorating selection, for kitchens, bathrooms and through the house. The latest designs in wallcovering and matching colorizer and Dutch Boy Paints. Savings from 10 to 30%.

Mon. and Fri. 8:30 a.m. to 8 p.m.; Tues., Wed., Thurs. 8:30 a.m. to 6 p.m.; Sat. 8:30 a.m. to 5 p.m.



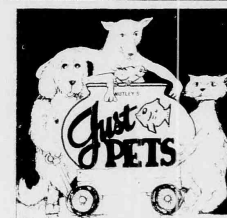
## Essex Replacement Door and Window

419 Broad Street, Bloomfield, N.J. 07003 (201) 743-8603

Dennis and Dianne Panza, the husband and wife team of Essex Replacement Door and Window Co., have attributed the success of their business to sheer hard work and local support.

The Panzas specialize in custom made replacement steel, wood and aluminum doors. Their vinyl windows range from a simple double hung window to elaborate bows and bays. They can take your hard to open, hard to close garage doors and install a lightweight maintenance free aluminum or steel door complete with an automatic garage door opener.

The Panzas have a convenient shop-at-home service or visit them at 419 Broad Street, Bloomfield. Call 743-8603.

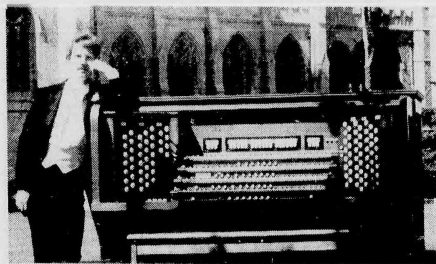


## Just Pets

251 Franklin Ave., Nutley 284-1122

The area's largest pet store, Just Pets, offers the widest variety of fresh & saltwater fish, birds, & small animals. A complete line of fish, dog, & cat supplies, bird cages & small animal supplies are always on hand. Their exclusive line of fur & mink dog coats attracts people statewide. Dog grooming is performed at reasonable rates. Open 7 days a week & every week-night, Just Pets offers friendly helpful information by phone (284-1122). Take a trip to the pet store that cares! 251 Franklin Ave., Nutley.





**Dedicatory Recital** — John Rose, a nationally known concert and recording artist, will perform at a dedicatory recital this Sunday afternoon at Bethany Lutheran Church. All are invited to attend and there is no admission fee.

## Dedicatory Recital At Bethany Sunday

A dedicatory recital on the newly installed organ at Bethany Lutheran Church will take place on Sunday, Feb. 12 at 3:30 p.m. The public is invited and there is no admission charge.

The performer will be John Rose, a nationally known concert and recording artist who is the organist at Trinity College and senior organist at St. Joseph's Cathedral, both in Hartford, Connecticut.

Between 1968 and 1977 Rose was organist of Sacred Heart Cathedral in Newark where he established a concert series which drew large statewide audiences. He is a graduate of Rutgers University and taught organ for a time at the school's Newark campus.

Rose has performed in 38 states and eight foreign countries on three continents. Last year, for example, he performed at the Mormon Tabernacle in Salt Lake City, and this year's performances will include a number of California dates, including appearances with the San Francisco Symphony.

European tours have included performances at such celebrated churches as Notre Dame de Paris and Westminster Abbey. He has made major festival appearances in Australia, Belgium, England, Norway and Scotland.

Rose records for Towerhill Records of Hollywood, California, which later this year will release the 15th entry of his discography. The organist's work for Towerhill Records is highlighted by a special series entitled "The French Romantic" which has drawn enthusiastic critical response from a number of national journals and major newspapers.

Last year Rose was honored with a special performance grant from the National Endowment for the Arts, and this summer he will share

workshop faculty duties at the national convention of the American Guild of Organists to be held in San Francisco. Next year he will be a featured performer at that organization's convention to be held in Rhode Island.

Among several noted composers who have dedicated works to John Rose is Malcolm Williamson, Master of the Queen's Music to H.M. Elizabeth II of Great Britain.

The new instrument at Bethany Lutheran Church was built by Associated Organ Builders in Auburn, Washington, and is the firm's first instrument in Essex County.

Unlike conventional electronic organs, this instrument generates the pitch and develops the harmonic characteristics (voice) of each and every note completely independently, just as is the case in a pipe organ.

Associated Organ Builders was selected to build the new organ at Bethany Church because the firm's instruments sound so much like pipe organs, according to Bruce Bamberger, chairman of the organ search committee and president of the congregation. The church considered a pipe organ, he noted, but could not solve the problems of budget and physical space which that choice would have entailed.

The note-by-note method of construction and voice development employed by A.O.B. results in the same chorus, or ensemble, of pipe organ offers. In both types of instruments, each note is actually a separate musical instrument waiting to sound and blend with other notes. The effect is like the blending of various instruments in an orchestra or various voices in a choir.

Rose's program for the Feb. 12 recital in Belleville will include works by Bach as well as a number of 19th century French composers.



**Buy Your Sweet  
A Bakery Treat**

**Heart-Shape Cakes**  
Your Choice of Filling

**Lovely Decorated For That  
Special Person In Your Life**

**Meyer's BAKERY & CAFE**  
227 FRANKLIN AVENUE  
NUTLEY • 667-8587

**J.G.'s TAVERN**  
\* Under New Ownership \*

Entertainment Everyday  
4 P.M.-6 P.M.

Every Friday & Saturday  
Entertainment

832 No. 6th St. Newark  
483-9071



## Clara Maass Honors 13 Residents

Thirteen Belleville residents recently received service awards at the Clara Maass Medical Center's annual employee service awards dinner held at the Atrium West in West Orange.

Receiving awards for five years of service were Bella Castagnino, Donna Makris, Claire Matti, Gloria Salernitano, Susan Wiedaseck and Marilyn Zuleta. Receiving awards for 10 years of service were Imelda Acuna, Florentina Gaglianin and Susan Pacheco, and receiving awards for 15 years of service were Elizabeth D'Amato, Salvatore Corino, Joan Osborne and Beverly Cohen.

Over 300 people attended the event intended to give recognition to those who have served five or more years at the Medical Center. Clara Maass Medical Center is a 575-acre care hospital located in Belleville.

## Italian-American Association's New Officers Are Installed

The Belleville Italian-American Civic Association has recently held an installation of officers for the year of 1984. The new officers are: Chris Albanese, president; Emil Casale, first vice president; Lee Carlo, second vice president; Al Vecchione, secretary; Frank Ceres, treasurer; Lucy Vecchione, corresponding secretary; and Joseph Formarotto, sergeant-at-arms. Trustees named are: Nick Graciguala, three years; Pat Rotondo, two years; and Angelo Veneziano, one year.

**1882-1983 101ST ANNIVERSARY**

**ODORLESS METHOD  
OF ELIMINATING  
FLEAS**

**BROUGHT HOME BY  
YOUR DOG OR CAT**

Fleas are more than a nuisance; they can infect your loved ones. Flea bites may produce small red spots that itch. They are also carriers of disease. The Bliss odorless method is guaranteed to completely eliminate fleas... it is a guarantee backed by our 101 year reputation for reliability.

**PHONE TODAY 676-8888**

**BLISS** ESTABLISHED 1882  
**TERMITE CONTROL**

ONE OF THE OLDEST AND LARGEST

**Sandy Lane  
Nursery School**

634 Mill St. Belleville 751-6380

**"A CHILD'S WORLD  
WHERE PLAYING IS LEARNING"**

Serving the growth of the community for 11 years

Days & hours to meet your needs  
Hours: 7:30-5:45

Call or come in to register School open to visitors

Development Programs in:  
• Arts & Crafts • Music • Skills  
• Language • Social Development

**NEW PROGRAMS**  
• Kindergarten Enrichment • Computer Program

Continuous day care programs for working mothers  
Nutritionally Balanced Lunch  
State Licensed Certified School & Teachers

Accepting Registration For The Summer and September  
Dedicated to a Program of Early Childhood Education

# GOT YOUR INTEREST...

## IN MIND

Nutley Savings offers the best features of savings and checking, all wrapped up in one account. Our Interest Checking Account pays 5 1/4% from the day of deposit to the day of withdrawal, giving you an effective annual

# 5 1/4% CHECKING

yield of 5.47%. Checks are free and the only cost is a monthly service charge of \$5.00 if your average daily balance falls below \$500. You earn interest on each and every dollar on deposit right down to a balance of \$1.00.

"Service Makes The Difference"

**Nutley Savings**  
AND LOAN ASSOCIATION

MAIN OFFICE:  
371 Franklin Avenue, Nutley, N.J. 07110 • Phone: 661-3200  
BRANCH OFFICE:  
221 Washington Street, Newark, N.J. 07102 • Phone: 623-7090

**SAVE \$2.00**

## If You Hate Going to a Self-Service Laundry

because it looks like an abandoned warehouse, your hairdo melts when you walk in and your children grow up while you're waiting for a dryer...

## You'll Love Our Maytag Home-Style Laundry

The surroundings are pleasant and comfortable. We've broken up those long rows of washers into convenient clusters so you're always just a few steps away from a dryer.

Our Maytag Dial-A-Fabric washers and dryers give you proper laundering for all of today's fabrics from permanent press to work clothes to delicates.

If you're always hand wringing, next time make yourself at home in our Maytag-equipped Home Style self-service laundry. You'll love it!

**COUPON**

**SAVE \$2.00**  
On Drop Off Service  
Wash, Dry & Fold  
(15 lb. minimum)  
Limit one coupon per customer  
Coupon expires Feb. 29, 1984

**COUPON**

**Maytag Home-Style Coin Laundry**  
300 Washington Ave. Belleville  
(Corner of Washington & Holmes St.)  
(Formerly Jolly Cleaners)

**OPEN 7 DAYS - 7 A.M. to 10 P.M. - Always Attended - Free Coffee, too**

# IRA CONTRIBUTIONS MADE NOW INCREASE YOUR TAX DEFERRED EARNINGS!

**NO FEES • HIGH YIELDS • ALL INSURED TO \$100,000 BY FDIC**

**PROVIDENT SAVINGS BANK**

Offices throughout New Jersey — member FDIC

## Deborah H. Gregor Bride Of Paul E. Bangert Jr.

Deborah Helen Gregor, daughter of Mr. and Mrs. George Gregor of Belleville, became the bride July 2 of Paul Edward Bangert Jr., son of Mr. and Mrs. Paul Bangert of Newark.

The Rev. Msgr. Byrne performed the ceremony in St. Peter's Church, Belleville. A reception followed at American Legion Post 70, Nutley.

Escorted by her father, the bride wore a white organza gown accented with Chantilly lace and beading and fashioned with a high ruffled neckline, long sleeves, double flounced hemline and chapel train. A crystal beaded lace tiara held her veil and she carried white French silk roses and green babies breath.

Patricia Gregor of Belleville was maid of honor. Bridesmaids included Marielyn Hettel of Garfield, Debra Bangert of Newark and the bride's cousin, Cynthia Spencer of Belleville.

The honor attendant was in a maragot blue silesta knit gown and a jacket with sheer long sleeves, Chantilly lace peplum, lace cuffs and high neckline. She wore blue and white French silk roses arranged on a comb and carried a light blue ceramic basket made by the groom's mother, aunt and grandmother and filled with two-toned blue and white French silk roses and babies breath. The others, in nivia blue gowns, had headpieces of blue roses and babies breath and carried dark blue ceramic baskets filled with blue roses and babies breath.

Frederick Masucci of Newark was best man. Ushering were Dominic Rhein of Nutley, Joseph Giannetto of Clifton and Timothy

Keating of Nutley.

Mrs. Gregor chose a short sleeved apricot silesta knit gown with a long sleeved Chantilly lace jacket. The groom's mother was in a peach short sleeved silesta knit gown. Corsages were white French silk orchids.

Mrs. Bangert, an alumna of Belleville High School, is a state-certified emergency medical technician for Clin-Cab Ambulance, Clifton.

Mr. Bangert attended Essex County Vocational and Technical High School, Bloomfield.

The couple honeymooned in the Pocono Mountains, Pennsylvania and have made their home in Irvington.

## Rosary Society Will Hear Program By Mel-O-Chords

St. Mary's Rosary Society will hold its general meeting Monday evening in the school hall. Members of the Mel-O-Chords, the touring singing ensemble of the Montclair Operetta Club will entertain.

The group is made up of professional and non-professional singers under the direction of Donna Jean Schultz. Some have appeared as soloists at Avery Fisher and Alice Tully Halls at Lincoln Center, Carnegie Hall and on major musical broadcasts both in the United States and abroad. Their repertoire includes works by Gilbert and Sullivan, Rogers and Hammerstein, Sigmund Romberg, Cole Porter and Jerry Herman.



Mr. and Mrs. Mario Roselli — nee Joan Attanasio

## Roselli-Attanasio Rites Performed in St. Thomas'

Wedding vows were exchanged Nov. 6 in St. Thomas the Apostle Church, Bloomfield, by Joan Attanasio, daughter of Mr. and Mrs. Joseph Attanasio of 26 Hickory Road, Nutley and Mario Roselli, son of Pietro Roselli of Bernalda, Italy. The Rev. Msgr. Cohn performed the ceremony which was followed by a reception at The Manor, West Orange. Pat Monaco, uncle of the bride, was vocalist.

Escorted by her father, the bride wore a gown of chantilly lace and silk taffeta fashioned with leg-o-mutton sleeves and cathedral train. A beaded headpiece held her fingertip veil and she carried colla lilies.

Janice Lovullo of Nutley was maid of honor. Bridesmaids included Janet DePalma, Michele DePalma, Linda Aiello, Patty Genaro and Mary Beth Wittig, all of Nutley. Junior bridesmaid was Maria Roselli

of Italy. They were attired in emerald green gowns with velvet bodices and satin skirts.

Cosmo Roselli of Jersey City was best man. Ushering were Martin DePalma and Michael DePalma of Nutley, Frank Ciola and Randy Riottio of Jersey City and Frank Tedesco of Bayonne.

Mrs. Attanasio chose an ivory silk gown with gold and silver tubular heading. She carried a single rose.

Mrs. Roselli, an alumna of Nutley High School, is with Bloomingdale's, Riverside Square.

Mr. Roselli, a graduate of Dickinson High School, Jersey City and St. Peter's College, Jersey City, is with Clapper's, Riverside Square. The couple honeymooned in Palm Beach and have made their home in Clifton.

## St. Peter's Dance Feb. 18

St. Peter's School Parent Teacher Council of Belleville will sponsor its fourth annual '50s Dance on Saturday, Feb. 18 at 8 p.m. in the church hall at 152 William St.

Admission is \$13.50 per person and includes a hot buffet, pretzels, chips, beer (bring your own bottle), soda and music. The dance will run for four hours.

For reservations call 759-7027 or 751-6469.

**Lamp Shades**

Lamp Repairs

**Anne Felkin Lamps**

73 WASHINGTON STREET  
BLOOMFIELD CENTER  
743 0372



Umberto's Corner

Dear Umberto,

Since I heard that the regular hair dye can give you cancer, I changed to a non-peroxide in an ashy shade. I like it but it is not as dark as the other colors I was using. I would like to know how to get the desired color. I keep the color on my head the same amount of time as the other color. Is there a way that you can suggest?

Susan Murphy

Dear Susan,

I personally believe that when the time comes, we all have to go if I were you, I wouldn't worry about cancer if you like the old color. If you still want to use the non-peroxide colors, they can be mixed. Take 3 oz. of the shade desired and mix with 1/2 oz. of the darker shade. Shake the mixture well. The longer you keep this mixture on your hair, the darker it will come. Leave it on until you achieve the desired shade.

Your non-worrier who enjoys every day of his life,  
Umberto

### UMBERTO OF NAPLES

547 East Cutting & Coiffure  
Washington Ave.  
548 Union Extension  
Haverhill, N.J.  
FREE PARKING  
759-4800  
OPEN SUNDAYS

## For an unbreakable guarantee, trust Pearle.

Nobody ever walks out of Pearle with a brand new pair of glasses and plans on breaking them. But accidents happen. Even to the most careful people. And when one does, we don't think you should have to pay for it. So we guarantee the frames and the lenses for one year.\* You break them, we'll fix or replace them. Free. How can we afford to offer a guarantee this good? If we want to earn your trust, how can we afford not to?

\*This limited warranty is good for one year on frames and lenses.



Nobody cares for eyes more than Pearle.

Dr. Stuart M. Schiffman, O.D., P.A.

Optometrlist

100 Passaic Ave., Kearny

at ShopRite Plaza • 997-0888 • 991-5080

Vision, MasterCard, Medicaid Accepted, Senior Citizen Discounts

**\$15 off**  
**30% off**

ANY PAIR OF EYEGLASSES WHEN YOU HAVE YOUR EYES EXAMINED AT THE PEARLE VISION CENTER

ON A SECOND PAIR OF GLASSES OF EQUAL PRICE FROM THE PEARLE VISION CENTER

COUPON EXPIRES 2/15/84

### The Belleville Dermatology Center, P.A.

announces

### The Psoriasis Treatment Center

Ultraviolet B • P.U.V.A. • Coal Tar  
State-of-the-Art Medical Psoriasis Treatment

Joseph S. Eastern, M.D.  
751-1200

This February 14, capture that special someone's heart with a



## Valentine's Basket

Step into our 19th century shop and fill a darling wicker basket with expressions of your love. You'll find an old-world of poppourri,

soaps, scents and toiletries from Caswell Massey, Crabtree & Evelyn, and Floris of London as well as luscious chocolate, cuddly plush animals, what-nots and whimses to custom-make your selection. The perfect way to say "I love you."



**Farrington Square Apothecary**

170 Broad St., Bloomfield, N.J. 748-8345



**On Tour** — The second graders from Belleville School 4 recently toured Clara Maass Medical Center as part of their health studies program. Other school groups and local organizations are welcome to tour the medical center by calling the public relations office at the hospital.

## School 4 Second Graders Enjoy Clara Maass Medical Center Tour

Clara Maass Medical Center sponsors a tour program for school groups and local organizations interested in learning about the medical center and the services it has to offer.

Tours are tailor made for each group involved. For instance, a high school group interested in careers may concentrate on the departments in which they are interested, a senior

citizen group may concentrate on the services offered to the community and volunteer involvement and a first grade class may want a general overview in an attempt to eliminate hospital fears.

Those interested in arranging a tour of Clara Maass may call Nancy Harper in the public relations office at 450-2267.

## CAMEO OPTICS



380 Main St., Belleville  
Grand Union Shopping Center  
751-4600

## "Make your love blossom."

Merlin Olsen



The Heart-to-Heart™ Bouquet from your FTD® Florist.

Valentine's Day is Tuesday, February 14.

Valentine's Week is February 8-14.



180 Washington Ave., Belleville  
759-0012

Send your thoughts with special care.™

®Registered trademark of Florists' Transworld Delivery Association.



## White Eagle Manor

### WEDDINGS

from **\$20** PER PERSON  
SERVED INDIVIDUALLY OR FAMILY STYLE  
CHAMPAGNE TOAST &  
WEDDING CAKE INCLUDED.  
3 HOUR UNLIMITED BAR  
Entertainment Friday and Saturday night



41 BROUGHTON AVE., BLOOMFIELD  
748-6590 • OPEN TO THE PUBLIC

### DR. FRANK P. ARENA

Podiatric Medicine and Surgery  
"Foot Specialist"

Complete Medical and Surgical Care of  
Adult and Children's Foot Disorders  
Including Sports Medicine and Diabetic Foot Care

Clara Maass Professional Center West  
50 Newark Avenue - Suite 104  
Belleville, New Jersey 07109

Hours By Appointment House Calls Available  
(201) 751-5208 Open Saturdays

**St. Valentine Would Be At  
Proud Mary's  
To Celebrate  
Why Not You?  
Bring Your Favorite**

Complimentary  
Corsage  
to all our  
female guests

**Valentine**

Tuesday  
February 14



Restaurant and Lounge  
409 Franklin Street, Bloomfield, NJ  
429-9246

## Urban Aid Funding Sliced By \$65,000

(Continued from page one.)

dropped.  
"We don't know why Bloomfield qualifies and Belleville doesn't," said Aduabato, who denounced the development as an indication of the Governor's "lack of the spirit of compromise."

"I can't believe the Governor could announce a surplus of over \$70 million but there was no portion there for Belleville," said the As-

semblyman, referring to the new state budget plan unveiled last week.

The township had to formally apply for the funding after learning of the available allotment. In reply,

Mayor Marotti received a Feb. 2 letter from Barry Skowkowski of the state Division of Local Government Service which cited as reasons for the rejection Belleville's "strong fiscal position" and "exemplary financial position."

## Whole Theatre Company Opening Comic Show

The Whole Theatre Company's Upstage Cafe is alive again as a club with the group Comic Relief providing four nights of fun on Friday, Feb. 17, Sat., Feb. 18, Friday, Feb. 24 and Sat., Feb. 25. The curtain rises on this contemporary musical comedy revue at 11:30 p.m. for all performances.

Comedy fans will recognize group members Sallie Schoneboom, Jack Keller and Tom Gilpin from the hit comedy group Kamikaze. Ms. Schoneboom, a WTC staff member, is also a vocalist for the band Toxic Waste. Jack Keller is a veteran of numerous productions at the WTC, Studio Playhouse and comedy clubs throughout New Jersey. Included in

### Tom Spillane Will Seek Second Term

(Continued from page one.)

long time," Spillane concluded. "Over the last three years every roof has either been replaced or there is a contract for it to be done. New windows were put into the Middle School and School 5. The interior of School 8 has been restored and the are bids out to replace the windows at School 8. I think it is essential that we get our building back into tip-top condition and keep them that way."

A former student of St. Peter's in Belleville, Spillane graduated from Belleville High School in 1958. He received his bachelor of arts in psychology from Rutgers University and attended Montclair State College and Rutgers Graduate School of Business Administration.

Comic Relief member's credits as an accomplished pianist and vocalist is a performance at Carnegie Hall. Bob Diacheyin is Comic Relief's writer, responsible for much of their original material. He was last seen in the highly acclaimed production of

"Tribute." The always effervescent funny-man Tom Gilpin rounds out the group as director. Gilpin has appeared in five WTC productions and acted and directed throughout the Northeast. Gilpin says, "I'm very excited about the opening. Bob Diacheyin's material is wildly original and will have people roaring."

**DR. JOHN A. SESTA**  
Obstetrics and Gynecology and  
**DR. HEE-JA SESTA**  
Gynecology and Infertility

Announce the relocation of their office  
to 500 Franklin Ave., Nutley, N.J.  
667-8212 By Appt. Only 667-0110



WRITE OR CALL FOR  
126 COURSE  
CATALOGUE

Most classes are held at the Montclair High School on Monday & Tuesday evenings, starting March 5 & 6, but there are now many daytime classes. Fees are very low, averaging \$32 for a 10-week course.

## ADULT SCHOOL OF MONTCLAIR

### UNUSUAL NEW COURSES

Institutional Stress, Maps, French Art & Architecture, History of Montclair, American Antiques, Oceanography, One Day Adventures, Shakespeare's Comedies, Astronomy, Ask A Lawyer, Investments, Getting New Job, Assisting Dentist, Basic Accounting, Drawing & Sketching, Healthy Cooking, Cook's Sampler, Connoisseur's Dinner, Fast Food Feasts, Ikenobo, Writing Poetry, Speed Reading, Know Your Environment, Tai-Chi Chuan, Nutrition, Aerobics, Stretching For Seniors, Green Thumb, Handy-Housewife, Fix It Yourself.

FOR CATALOGUE AND INFORMATION

CALL 746-6636

or write Adult School of Montclair,  
Montclair High School, Montclair, N.J. 07042

### People-to-People Service

**"When the storm hits, I'll be there."**

Richard Cummings, Trouble Shooter



### STORM EMERGENCY CHECKLIST Reporting the problem

- Call PSE&G. Look on your bill or in the phone directory for the number.
- Give location, nature and extent of the trouble.
- If damage is widespread and our phone lines are busy, the trouble has probably been reported.

### While power is being restored

- Don't go near or try to move fallen power lines. Notify the police or fire department.
- Turn off all major appliances. This will prevent an electrical overload when power is restored.
- Don't heat your home with any combustion equipment such as your gas range or kerosene stove unless properly vented.
- Keep a flashlight handy. Also, keep a battery-powered radio for service restoration information.
- If your neighbor's power comes on and yours does not, please call again.

- Avoid opening your refrigerator or freezer. Food will keep cold for hours, and frozen food for a few days. If power is not restored within 24 hours, consider contacting friends or relatives not affected by the outage and transferring your food to their homes. Before transporting, wrap frozen foods in thick newspaper, blankets, or insulated boxes to prevent thawing.
- Avoid opening outside doors. You'll conserve heat in winter, and cooler indoor temperatures in summer.

### We won't keep you in the dark.

We don't know when or where a storm is going to hit that will cause a power outage. But when it happens, we want to restore your power with minimum inconvenience to you. If power is out in your entire house, and also in the neighborhood, call us immediately. We'll respond as quickly as possible. If only part of your house has been affected, the problem could be your circuit breakers or fuses. Check them first before calling.

Meantime, the suggestions on PSE&G's Storm Emergency Checklist might help ease your situation until power is restored. Clip it out and keep it handy.

### That's people-to-people service

No matter what the weather, we want to help you use energy more wisely. Look for our "Seal Up and Save" energy conservation messages with your bill, or in your local newspaper.

## THE BEST SALE IN Plaza Bootery HISTORY



**SALE**  
45.00  
Reg. 90.00  
By Red Cross

Yukon



**SALE**  
39.00  
Reg. 78.00  
By Life Stride

Piper



**SALE**  
45.00  
Reg. 60.00  
By Desco

Waterproof  
Shepherd



**SALE**  
45.00  
Reg. 60.00  
By Desco

Waterproof  
Ithaca



**SALE**  
19.00  
Reg. 38.00

Jasmin by  
Red Cross



**SALE**  
22.50  
Reg. 45.00

Sprint by  
Red Cross



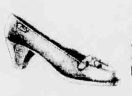
**SALE**  
20.00  
Reg. 40.00

Showdown by  
Red Cross



**SALE**  
22.00  
Reg. 44.00

Ashley by  
Bass



**SALE**  
24.00  
Reg. 48.00

Diana by  
Bass



**SALE**  
19.00  
Reg. 38.00

Hanna by  
Dexter

All Shoes On Rack 50% Off Reg. Price

9 West Desco Red Cross Dexter Bass Life Stride Zodiac Clark

Men's Florsheim, Special Group 20% Off Reg. Price  
All Fry Boots 50% Off Reg. Price

**Plaza Bootery**

483 Franklin Ave.  
Nutley, N.J. 667-8964

Some styles are not available in all sizes, widths or colors



**PSE&G**

Public Service  
Electric and Gas  
Company

Energy People  
Working smarter to serve you better

# New Flip-Top<sup>®</sup> box

Soft pack or new Flip-Top box.  
Either way, you get a lot to like.



# Marlboro Lights 100's

The spirit of Marlboro in a low tar cigarette.

Warning: The Surgeon General Has Determined  
That Cigarette Smoking Is Dangerous to Your Health.

11 mg "tar," 0.8 mg nicotine av. per cigarette, FTC Report Mar '83  
Box 11 mg "tar," 0.8 mg nicotine av. per cigarette by FTC method

© Philip Morris Inc. 1984



# Belleville Times SPORTS

## Apicella to Shatter State Record Soon

By Michael Lambert

And now, it has come down to 53 points. That's all that separates Jennifer Apicella from a date with destiny. Just 53 points and Apicella will become the all-time leading scorer in New Jersey history.

Just two weeks ago, it appeared that her season would end early, but Jenny has fought back, and now the senior all-American is red hot, having her most productive games ever last week. P.S. Her team is 14-3 and gearing for a serious run at the Essex County Tournament.

The big week started with a match in Teaneck on Tuesday. There was the possibility that Apicella would break the record in that game, but chances are good that it will be this afternoon (Thursday), when the girls travel to Bayonne for a 4 p.m. start. At press time, the Belleville player, mainly Karen Fucello, were trying to change that Bayonne contest to a home game, but that's not definite. Tomorrow afternoon,

Ridgewood comes in for a 4 p.m. start in round one of the Essex County Tournament. On Wednesday, Belleville hosts Kearny, also at 4 p.m.

Last week the girls won three straight games, beating Passaic, 66-62, Hackensack, 59-55, and Kennedy, 70-57. Apicella was torrid in all three contests, connecting for a career high 51 points against Passaic, tallying her "usual" 41 against Hackensack and then coming back with 47 in the Kennedy game. For the week, Apicella averaged 46 points a game and for the season, she's averaging 36.3 ppg. Her free-throw shooting has also improved; she's now hitting a solid 87 percent from the stripe. Entering this week's action, Apicella has a career total of 2,693 points. Since she returned from her injury against Eastside on Jan. 17, she has scored 41, 51, 41 and 47 points. This, despite a broken wrist, two sprained ankles and a broken finger incurred earlier in the season.

"We're running and scoring," said head coach Karen Fucello, "but we're not playing defense. This is when the games really start to count. This week, Teaneck, Bayonne and Ridgewood will all be big, then there's the Essex County Tournament. If we're going to advance in the county and state tournament, we're going to have to play solid defense, the way we did against Eastside a few weeks ago."

In the Passaic game, Belleville jumped out to a big lead, 21-13, after one quarter and 40-26 at the half. However, in the second half, Passaic came back, hitting a wide range of outside shots and cutting the deficit to as little as four points. With Passaic trailing 64-62, Belleville's Tracy Buono was fouled with 15 seconds left in the game.

"Debbie (Meolo, assistant coach) and I looked at each other and smiled when that happened," recalled Fucello. "The one person I would have loved to see at the foul line was

Tracy, she is tough under pressure." Buono, with a large crowd looking on, calmly sank both ends of the free throws and Belleville won a tough game, 66-62. Apicella was the offensive machine, tallying 51 points. Donna Brooks had seven, Dina De Aquino, four, Tracy Buono, two, and Sheri Phelps, two.

The Hackensack game was similar. Belleville jumped out to a lead, then held its breath as the opposing team came back strong in the second half. The girls, usually a strong fourth-quarter team, managed only 10 fourth-quarter points against Passaic and 10 against Hackensack. Fucello credited that statistic to poor conditioning. "We're not getting proper practice time, sometimes we get to use only half a gym. With the big games coming up, we need the extra time."

Belleville led, 49-39 entering the final quarter, but had to hold on to win, 59-55. Apicella had 41 to lead the way, followed by 10 from

Brooks, six by De Aquino and two foul shots from Loreli Wells.

Versus Kennedy, the opposite occurred. Belleville led by only four, 46-42, entering the final quarter, then put on the afterburners and won by 13, 70-57. Apicella, as usual, was the leader of the fourth quarter surge, hitting some key baskets to put the game away. Donna Brooks also had a hand in it, pulling down some key offensive rebounds and laying them in for field goals. On the night, Brooks had 11 points, De Aquino, eight, Wells and Buono, two, and of course, Apicella had the big 47 points, cutting the magic number to 53.

Barring a major snowstorm or something unforeseen, Jennifer Apicella will indeed be the all-time leading scorer in New Jersey history when this week is through. The record will be a tribute to all the years of hard work and certainly will

(Please see 'Apicella' on page 13.)



Jennifer Apicella  
Making History

## Grapplers Post Two More Victories; Gain Top Seed in County Tourney

By Dino Ibelli

Can anyone stop the Buc wrestlers? Certainly Paramus Catholic and St. Joseph's of Montvale weren't able to do the trick last week as the local grapplers boosted its team record to 9-0-1 with two impressive victories.

This week, the team hosted Don Bosco in a makeup match on Monday, hosted Bloomfield yesterday in a big match and will be in Oradell on Saturday to battle a good Bergen Catholic squad. The Bucs were also given the number one seed in the upcoming Essex County Invitations.

Last week, Belleville rolled past Paramus Catholic, 54-12 and did a similar number to St. Joe's, 42-18. Versus Paramus Catholic, Tim Buckley got his team off to a 6-0 lead without stepping on the mat. Buckley won via forfeit and Belleville won the way. Junior sensation Don Cerreto beat Joe Connor, 8-2, in a close match. Cerreto, who took third in the regionals last year, is now 15-1 this season and looking for a good showing in the post season tourna-

ments. "I would like to get to the states and at least place there," Cerreto said. The way he's going, the dream could be reality.

Over at 115, Dennis Ives won a tough 8-5 match over Danny Riglioso. Mike Giuffrida kept the crowd happy when he recorded the fastest fall for a Belleville wrestler by showing John Cannon the lights at :17. For 'G', the quick victory boosted his seasonal record to 10-2-1, his eighth straight victory after a slow start.

Paramus got some life when Steve Zombory pinned Vin Padula late in the third period. This was a match that Padula was in control of, but the Buc got caught late in the match and suffered the fall.

Luke Siletti, a big surprise, continued his success by pinning Jim Gotthold at 1:29. Siletti is riding a seven match winning streak and boasts a very impressive 10-6 record. Over at 141, Ralph Zarro won by forfeit, boosting the Buccaneer lead to 30-6.

At 148, Jerry Liprella of PC won

by default when Belleville's Carmen Cerreto hurt his shoulder and could not wrestle. Cerreto's injury is considered serious and the senior might have to miss the remainder of the campaign.

Jim Meyler continued his assault by pinning his opponent early in the second period. The win was Meyler's eighth in his last nine matches and he is very impressed by the teams performance. "This year's team is filled with young guys who want to wrestle."

Meyler also leads the club with 12 pins this season. At 170, Jaime Lijo pinned Marty Zybur at 3:04. For the season, Lijo is 10-2 with a five pin streak on the line.

At 188, Mike Gibbons was a winner once again, pinning Steve Rancoc. Gibbons has won all 15 matches this season and now has nine pins in his record. Mark Criscione put the icing on the cake by pinning Tom Mc Gauley in :26. For the year, Criscione is 3-2.

The St. Joe's match started off slowly for Belleville when Tim

Buckley lost a close 6-4 decision. Cerreto extended his winning streak to ten matches by pinning Pat McGrath in :52. Vin Capriglione lost to Frank Brudimesso, 10-4, tying the match at six.

Mike Giuffrida continued to win, pulling out a close 4-3 decision over John Mussone. The victory boosted Belleville's lead to 9-6. At 129, Darren Shedd pinned Don Vaisio in 3:50, raising his record to 3-4.

The junior combo of Siletti and Zarro rolled to victories. Siletti won by a 7-5 score over Andy Sample and Zarro pinned Mike Cantone in 1:08 of the first period.

Sam Zamlot, filling in for the injured Carmen Cerreto was pinned late in his match, but the threesome of Meyler, Lijo and Gibbons all did their specialty, pinning the opponent, to put Belleville ahead for good and boost the score to 42-12. At heavyweight, Mark Criscione was pinned at 1:23 to make the final, 42-18.

NOTES: Wrestlers of the week go to Zarro and Siletti.

## Indoor Track Team Closes Out Season

The Belleville indoor track team closed out its winter season by competing in the Ridgewood Invitational at Rockland Community College last weekend.

Next week, The Times will wrap up the Bucs' indoor campaign.

Head coach John Tosato was pleased, not only with his team's effort in the invitational, but also with the meet in its entirety. "There were 138 schools entered and over 1,400 athletes," said the coach. "Everyone got a chance to run on a nice facility against some very good athletes."

Patty Bliss had a good day, running a 12:31 in the two mile run, tying the school record set earlier this year. Bliss will now concentrate on the outdoor campaign as the senior winds down a very successful career.

Junior Bob Hutchinson ran an 11:29 in the two mile, tying his school record. Junior Billy Huamani ran a 5:25 in the mile, tying his personal best while Tim Daudelin threw the shot put 37 feet, 2 inches, his personal best.

Tosato is hoping to have his team compete in some developmental meets, but if the weather doesn't improve, then those meets will have to be cancelled. The outdoor season begins with practice March 8 and Tosato hopes for a big turnout.

"We have a lot of runners and throwers back from last season. There is a lot of interest among all students, I'm expecting a really good turnout," he said.

## Grappler Michael Gibbons Earns Athlete of the Month

He has been doing his job so quickly and so effectively lately that not many people realize what a fantastic wrestler Mike Gibbons is. But his opponents, teammates and fans know that Gibbons is a wrestler to be taken seriously and his amazing performances during the month of January have earned Gibbons the Belleville High School Athlete of the Month.

"It's been a lot of weight lifting, a lot of work," said the junior grappler, who is dominating the 188-pound circuit. "I ran over the summer and getting ready for football has kept me in good shape for wrestling."

Gibbons played nose guard for John Senesky and the Buccaneers last season. He can also be used in the backfield and should see extended action there next season as the Bucs look to revamp the backfield that was left vacant by the graduation of Mike Murphy, Bill Baber and Frank Tursi.

However, it's wrestling that is on Gibbons' mind now and he is doing a great job of it. Entering the match with Don Bosco, he sports a 15-0 record. During the month of January, only his opponent from Kearny was able to keep his shoulders off the mat. The reason for that is the Kearny man forfeited the 188-pound match.

It all started on Jan. 4. Gibbons had already captured the Essex County championship and the Bloomfield Holiday tourney. On January 4, he pinned his Fair Lawn man early in the third period. Two days later, versus Hackensack, Gibbons was a fall victim again, shoving his opponent the lights in one minute of the first round.

On to Jan. 13, the results are the same. Versus Teaneck, Mike needed just 45 seconds of the second period to dispose of his man. Eight days later, at Ridgewood, Gibbons rolled to victory via pin again, defeating his man in the second period. On Jan. 25, another pin, this time against Paramus. The 27th, yet another pin, an easy first round decision over Passaic. And the Kearny match, on Jan. 28, did Gibbons not pin and that was because his opponent forfeited.

The victories by way of pin have continued in the early stages of February. In the Bucs victories over St. Joseph's and Paramus Catholic, Gibbons was a six point winner once more.

Little wonder his club is 9-0-1 and working toward that 'big undefeated season.' "I don't think that coach (Gene D'Allesandro) has ever had an undefeated season," said Gibbons. "We're working hard to get him that season."

Gibbons has had help along the way. Jimmy Meyler, Mike Giuffrida, Jaime Lijo, Dom Cerreto, Ralph Zarro and Luke Siletti have all won at least 10 matches this year in helping Belleville to its very impressive showing. Gibbons knows that in order to achieve that state ranking, Belleville will have to perform well in the districts.

"We're gearing for the districts. St. Benedict's is ranked in the state and they are, in our district. If we can beat them, then we have a good chance of getting that state ranking." He's also looking for a rematch with a certain John Tascotti of Cliffside Park, who defeated him in the regional semis last year. As a sophomore, Gibbons won the district title. He will be a

heavy favorite, not only to win the districts, but to advance as far as the states this year.

"I think I have a good shot at advancing to the state semis this season. There will be some tough matches along the way. "I'm the only returning wrestler going to the regions this season, I'm hoping for a good seed for the states."

Who does Gibbons credit for his success this year? Coach (Gene) D'Al-

## BUC SHOTS

By Michael Lambert

Sports Editor

lesandro, (Dennis) Villano and (Joe) Nisovocchia," said the junior. "I never went to camps before, so everything that I've learned, I've picked up from them."

Gibbons first started wrestling in the ninth grade for Dennis Villano. He quickly made his mark on the varsity last season, winning a district crown. This year, he's hoping to become the first wrestler since Chris Musmanno to win a regional crown and advance to the state tourney.

Gibbons enjoys football and wrestling. His choice for college is undecided at this time, although he does admit that wrestling might be his top choice. In the mean-

time, Mike Gibbons will be on the mat for Belleville High School, getting stronger and stronger and giving opposing wrestlers a lot of sleepless nights for the next year.

Good luck to the girl's basketball team this week as they battle some tough clubs in Ridgewood, Bayonne and Teaneck. A lot of eyes will be on Jenny Apicella as she closes in on the state scoring record of 2,745 points. Entering the Teaneck game, she needed just 53 points to break the record and will probably do it this afternoon at Bayonne High School. It's been a lot of hard work for Apicella to achieve that goal, best wishes to her as she adds a new page to the history book.

A letter to Bill Kennedy, a writer for the Elizabeth Daily Journal who wrote some ridiculous article a few weeks ago, criticizing Karen Fucello for Apicella's injury in the Eastside game on January 17. Dear Bill: It's beyond me where you get the nerve to criticize a high school coach for putting out a player in the third quarter of a game because her team has a big lead. Who are you to decide when a player should be removed and when she shouldn't? Bill, did you know that when Belleville played Eastside last season, Eastside had a 24 point lead in the third quarter and Belleville came back to tie the score in the fourth period. Were you at the Belleville-Eastside game the day Apicella hurt her wrist? Did you have the guts to speak to Karen Fucello in regard to the injury? Oh, and by the way, Bill, did you go to the Belleville-Passaic girls game last week. In that contest, Belleville led by 22 points in the game, then had to rally to win. If Karen Fucello had left Apicella in

the ball game with three minutes left in the fourth quarter, your point would be somewhat valid. No one was looking to run up the score in the Eastside contest. All you have to do is look up Eastside's past record to know that any club coached by Barry Rosner has the capability to come back. Oh, Bill, did you know that on opening day, these two teams played and Belleville won 44-43. These two teams have played some tight ball games along the way. There are a number of teams capable of coming back from 26 point deficits when that deficit is still in the third quarter. The next time you decide to criticize a high school coach, have the guts to speak to that coach first, not give your opinion of something you know absolutely nothing about. Sincerely yours, Mike Lambert.

The Belleville High School athlete of the week goes to Tracy Buono of the girl's basketball team. Tracy hit two big free throws, to defeat Passaic last week and keep Belleville in the NNJHL race with Ridgewood and Teaneck.

Here is the answer to last week's quiz. The question was, name the MVP of the 1982 World Series and the score of the seventh game. The answer: Darrell Porter of the St. Louis Cardinals was the MVP and the Cards defeated the Milwaukee Brewers in the final game, 6-3 with Juan Andujar the winning pitcher.

For this week's quiz, in the Mets 1969 World Series triumph, name the winning pitchers in the Mets victories and the only Oriole pitcher to notch a win. Also, name the MVP of the 69 classic and the Orioles' 20 game winners that season.

## Heard At Ringside

By Steve H. Frank

Welterweight Maurice Blocker of Washington, D.C. didn't waste any time in building up an early lead by outboxing a charging Terry Holmes of Kalamazoo, Mich. Outweighed 148 to Holmes' 158, Blocker was not phased by the weight difference as he built up an unsurmountable lead until Holmes did not answer the going for the 7th round. Undefeated Blocker boosted his record to 16-0. Holmes in suffering his first defeat is now 12-1. The bout scheduled for 10-rounds was fought at Atlantic City's Tropicana.

Undisputed world middleweight king Marvelous Marvin Hagler of Brockton, Mass. confirmed in Boston, Tuesday, "I'll make my 9th title defense against Juan Domingo Roldan of Argentina on March 30th in Las Vegas (Riviera Hotel)." The 29-year-old champion with a 58-2-2 diary has his sights set to break the streak of Carlos Monzone of 14 successful, consecutive middleweight title defenses. The challenger, age 26, sports a 50-2-2 record.

At the press conference in Boston, Wednesday, it was evident Marvin Hagler's manager/trainers Goody & Pat Petronelli are not happy with promoter Bob Arum of Top Rank, Inc. The Hagler camp feel that they were given the shaft in the division of money from the middleweight champ's successful title defense against Roberto Duran. Pat (Petronelli) said, "This is our last option with Arum and there will be no more options with him."

Undefeated light heavyweight David Sear of Howard Beach, N.Y. pushed his record to 14-0 while adding another defeat to the oft beaten Eric Winbus of New York City at Atlantic City, Wednesday. Winbus now has a 14-7 chart. Sear won a 10-round unanimous decision.

Sugar Ray Leonard took a day off from his training in Palmer Park, Md. and joined his manager/advisor Mike Trainer at an afternoon news conference at The Centrum in Worcester, Mass. Trainer announced that the Leonard-Kearney Howard fight Feb. 25 will be fought in The Centrum. The 13,000-seat arena was secured through Dan Doyle of KO Inc.

David Braxton of Detroit was matched to take on Earl Hargrove the knockout artist out of Philadelphia, March 11 in Atlantic City. Braxton, a member of Emanuel Steward's Kronk Stable of fighters, said the reason for the pull-out, "I refuse to fight in Atlantic City." Jersey City's Mark Medall will replace. The bout will be telecast over NBC-TV Ch. 4.

And we did not think managers thought of anything but to get their fighters rated by WBA and WBC. Mickey Duff of England and manager of undefeated British heavyweight Frank Bruno (20-0), declined when World Boxing Council (WBC) wanted to rate Bruno. Duff amazed everyone by saying his fighter is not ready yet.

There was a benefit held to defray some of middleweight Sugar Ray Seales' eye operation expenses totalling \$9,000. After the event, which included Ray Mancini, Sammy Davis Jr., Marvin Hagler and Muhammad Ali, promoter Ed Gardner reported, "No money was made on the affair."

## Boys Continue Tough Despite Losing Record

The record is just 5-11. There will be no state tournament, no NNJHL title, and most likely, a non-winning season. However, head coach Joe Papisidero is very happy with the play of his boys' basketball team. What the club lacks in the "W" department, it more than makes up for in "H & D" department.

The Bucs hosted Teaneck on Tuesday. Tonight, they will be in West Orange for the preliminary round of the Essex County Tournament. Game time is set at 7:30 p.m. If Belleville wins, the boys will battle defending champion Montclair at Bloomfield next Tuesday, starting at 7:30 p.m. If they lose, then the Bucs will host St. Joseph's of Montvale on Tuesday starting at 4 p.m. Tomorrow night, the team is in Ridgewood for an 8 p.m. start. A game with Kearny, originally set for last Monday, was postponed until Feb. 24.

Last week, Joe Papisidero's "overachievers" lost two tough games, bowing to Passaic, 73-61, and Hackensack, 72-60. In both contests, the Bucs were in the heat of the ball game until late in the contest before bowing to clubs that were much bigger in height, but not in hustle and desire.

"I can't say enough about the way these kids put out," said the coach. "Game in a game out, we're playing much bigger teams and playing hard. Against Hackensack, our starting lineup was no bigger than 6 feet. Some of the guards on opposing teams are bigger than our center."

Most fans know that Belleville's top scorer, 6'3", 215 pound Phil Colalillo went down in early January with a ruptured appendix. When Colalillo went out, the Bucs were 4-3. With him in the lineup, they might have won five or six more games, but that's something the Bucs have learned to deal with.

Versus Passaic, Belleville led by eight points after one quarter but trailed by two at the half. They played a seesaw second half with the Indians, but fell short in the waning minutes. Joe Borrello scored a career high 27 points and Danny Ward, the team's most consistent performer offensively, had 18 points. The Bucs' backcourt has been the glue of the team and Papisidero is very pleased with its effort. "Danny and Joe are doing a super job for us. Also, our forwards, Steve (Kimble) and David (Boyd) are playing against taller opponents game in and game out. I don't think either one of them have played against a man their own size all year long."

The Hackensack contest was similar. The Comets took a 17-16 first quarter lead and ballooned the margin to 37-27 at the half. "We're down by six late in the first half," recalled Papisidero. "I tell the team look for the layup. If you don't have it, then hold for the last shot. Instead, we get called for an offensive foul. They score, we turn the ball over, they score again and we're

down by 10 at the half."

Just when it seemed Hackensack had the game in hand, Belleville came right back, outscoring the Comets, 17-12, and cutting the lead to 49-44 entering the final frame. Not had against a team that had beaten powerhouse Montclair just a few nights before. Not had against a team ranked number one in Bergen County.

The Bucs trailed by five with three minutes remaining in the game but had to foul to stop the clock and Hackensack managed to convert the free throws to win by 12, 72-60.

Ward was the Bucs' top scorer with 23 points, followed by 15 from Borrello, 10 by Boyd, five from Kimble, four from Danny Riordan, a field goal by Bill Nankervis and a free throw from Brian Cook.

The Hackensack game was a tough loss, tougher still when you consider that Mike Sockachi, the Bucs' 6'3" forward, went down early with a lower back problem, an injury that has hampered him most of the season. "Their (Hackensack) coach gave us a great compliment," said Papisidero. "He told his kids that they won't find a scrappier bunch of players anywhere in the area. It's nice that opposing players and coaches know that they will be in for a tough game with us. The kids are playing hard. What more can I say?"

NOTES: The Essex County Tournament seeded Columbia as the top seed in this year's tourney. Montclair has won the championships the last two seasons, defeating Seton Hall Prep in double overtime last year and blowing away Shabazz in 1982. Belleville won the first Essex County Tournament. The Bucs lost to East Orange in last year's preliminary round. Their only other appearances in recent date were in 1980 (a 93-69 loss to Clifford Scott) and 1975 (85-55 to East Orange). West Orange 9-7 entering this week's action. Last season, the Cowboys won the Group II, Section II championship, advancing as far as the state semis before losing to Elmwood Park. Cowboys also hurting in the injury department: they lost their standout center, Kyle Dotson before the season ever started when Dotson broke his leg in the football finale.

**LOUIS PONTIAC LEASING**

Did You Know... You Can **LEASE**

Any Make or Model  
American or Imported Car  
**For Less!**

call or see  
**John Regan or Jim Brown**

**NOBODY... BUT NOBODY BEATS OUR DEALS!**

**LOUIS PONTIAC**  
PARK AND RIVERSIDE AVE.  
LYNDHURST 939-6100  
Mon. - Fri. 9-5, Wed. 11-6, Sat. 11-5

**CAMEO OPTICS**

**BUY 1 PAIR GET 1 FREE**

380 Main St., Belleville  
Grand Union Shopping Center  
**751-4600**

**BE MY VALENTINE Dianna!**

Today,  
Tomorrow,  
Always,  
Tedd

## Recreation Grapplers Beat Glen Ridge, 60-35

The Belleville Recreation wrestling team won a very impressive battle against last year's league tournament champs, Glen Ridge, 60-35.

Winning by pins for the Belleville squad were 60-pounder Emilio Nardone who pinned his opponent in 1:58; 65-pounder Ralph Perna who pinned in 34 seconds; John Stampone, 85-pounder who recorded the fastest pin of the evening in 25 seconds; Joe Cerreto, 95 lbs. in 1:52 and John Raimo who pinned in 3:28.

Next on the Belleville schedule was the always powerful West Essex team which defeated Belleville by a score of 60-33.

Coach Joe Nisivocchia comments, "The West Essex match was very exciting. There were 15 pins registered out of the 16 pair ups. Even though we lost the match, many of the wrestlers who were pinned wrestled very competitively before being caught on their backs."

Registering pins for Belleville were Emilio Nardone in 1:40, Ralph Perna in 2:55, 80-pounder Bill Van Sychel in 1:24, John Stampone who recorded the fastest pin for Belleville in 55 seconds and Armando Nardone in 2:55. Dawson Bloom (145 lbs.) won a hard fought 6-2 battle.

Belleville improved its record to 5-3 by impressively defending its next three league opponents, Livingston 60-33, Cedar Grove 74-16 and Millburn 49-37, revenging last year's loss.

Against Livingston Emilio Nardone recorded the fastest pin of the day, pinning his opponent in 25 seconds. Other pins recorded were from Bill Van Sychel in 48 seconds, John Stampone in 48 seconds, Joe Cerreto in 1:55, Mike Iuliano (95 lbs.) in 52 seconds, Joe Raimo in

3:45, Armando Nardone in 1:15, Dawson Bloom in 37 seconds and heavyweight Frank Pacheco in 2:15.

Against the Millburn Recreation Wrestling team, Belleville pinned six opponents. Emilio Nardone again pinned at 60 pounds in 1:34 to bring his pin record to four in a row. John Stampone pinned in 1:38 to bring his pin record to six, Joe Cerreto pinned in 3:47, Mike Iuliano pinned in 1:55, Armando Nardone pinned in 2:04 and Dawson Bloom in an exhibition bout pinned in 1:37. Winning by decision for Belleville were Ralph Perna 13-3, and 112-pounder Dan Nappi 8-1.

The past Saturday against the Cedar Grove team, Emilio Nardone continued his winning ways with a 9-5 decision at 60 pounds, to bring his record to 7-1. Ralph Perna won by forfeit to bring his record to 7-1. Bill Van Sychel holds the team record for the fastest pin when he matted his opponent in 12 seconds with a standing cradle. Van Sychel's record remains at 4-2. Undefeated John Stampone won a major 10-0 decision which brought his record to 8-0. Undefeated Joe Cerreto pinned in 2:37 to bring his record to 8-0 with six pins. Mike Iuliano pinned in the 100-pound class in 2:16 to bring his record to 4-4. Armando Nardone pinned in 3:04 to bring his record to 8-0 with six pins. Dawson Bloom and Frank Pacheco both won by forfeits to bring their records to 6-2 and 4-3.

The Belleville Recreation wrestling team's next and last match is against Maplewood before it puts its individual performances on the line in the Essex County Junior Wrestling League's annual wrestling tournament on Sunday, Feb. 12, at West Essex High School.

## Racquetball-Aerobics-Nautilus Anniversary Sale

**\$75<sup>00</sup> Membership Fee**

Come in and celebrate the first anniversary of our beautiful nautilus fitness center.

For a limited time (Feb. 1-15th) we are offering a 50% discount on our \$150<sup>00</sup> membership fee.

### WE HAVE:

- \* 14 Racquetball Courts
- \* 2 Volleyball Courts
- \* Completely Supervised Nautilus Fitness Center
- \* Aerobics (Day & Night Classes)
- \* 16 Station Universal Gym
- \* Steam & Sauna Rooms
- \* Free Babysitting
- \* Kitchen Facilities
- \* Locker & Shower Rooms
- \* T.V. Lounge Area
- \* Free Weight Area (coming soon)

**COURTIME**  
Meadowlands  
Racquetball & Nautilus Center  
205 Chubb Ave.  
Lyndhurst, N.J.  
**933-4100**

You've heard us on WCBS and WINS Radio

**5 minutes via Rte. 21 Belleville/Nutley**

**YOU can get the great deals on**

**HONDA PONTIAC or VOLVO**

that have brought hundreds of people from ALL OVER the Tri-State area

**City Motors**  
River Drive, at Rte. 21, Passaic Park  
**777-1600**

**March of Dimes**  
BIRTH DEFECTS FOUNDATION

**SAVES BABIES**

HELP FIGHT BIRTH DEFECTS



THIS SPACE CONTRIBUTED BY THE PUBLISHER

**Leave the servicing to us...**

- Brake Specialists
- Electronic Tune Ups
- Tires - Wheel Balancing

**OVER 25 YEARS EXPERIENCE**  
**N.I.A.S.E. Certified Automotive Technician**  
**OL' BETSY AUTO REPAIR**  
504 Washington Avenue, Belleville - 759-5561  
MASTERCARD and VISA ACCEPTED



## ORTHODONTICS



AFFORDABLE BRACES  
FOR CHILDREN & ADULTS

CONVENIENT HOURS  
(EVENINGS TOO!)

DENTAL  
INSURANCE  
WELCOME

SECOND OPINIONS PROVIDED

NEVER A CHARGE FOR CONSULTATIONS  
DR. MICHAEL B. FITZPATRICK  
484 Washington Ave. Belleville  
759-2173

## Golden Comments

By James Golden



It was a cold winter's day in the early part of 1966 that a proud mother, Joe Burke, who soon would become his best man, and yours truly drove to Sea Girt, N.J., to observe the induction of son Jim Golden into the Highway Patrol Bureau Inspector Force known as the Division of Motor Vehicles' Enforcement Bureau. As a councilman at the time, we were given the honor to pin on his badge...a moment to swell the gratification of a father whose boy was embarking upon a respected career of law enforcement.

During the past 18 years of service in that agency, although not meteoric, had resulted in rank elevation, through competitive examination, to that of a lieutenant. As it must through the vicissitudes of time, changes had been envisioned in consolidation of law enforcement at the state level.

In July 1966, the Inspector Force was created as the enforcement arm for the Commissioner of Motor Vehicles with the primary purpose of regulating traffic on the state highways. From its inception through World War II, the Inspector Force divided its effort between general patrol and supervision of the statewide driver license testing facilities. The duties of the Inspector Force were greatly expanded during the next two decades to include truck weighing functions, criminal and regulatory investigations, and instructional responsibilities in several local and county police academies. During this period, the Inspector Force became known as the Division of Motor Vehicles Enforcement Bureau.

Since the early 1930s, consideration had been given to consolidation of the Enforcement Bureau with the Division of State Police. This proposed merger was viewed as an effort to avoid overlapping assignments and improve operational efficiency by placing statewide enforcement under one divisional head, the Superintendent of State Police.

On Feb. 10, 1979, an executive directive issued by the Attorney General transferred the Enforcement Bureau to the Operations Section, Division of State Police, where it became known as the Highway Patrol Bureau.

On Friday, Jan. 20, 1984 at 1 p.m. induction ceremonies at the New Jersey State Police Training Center, Sea Girt, N.J., marked the culmination of that consolidation as uniformed officers of the Highway Patrol Bureau were sworn in as full-fledged members of the New Jersey Division of State Police.

That was another bitterly cold day as we embarked with Kevin Kennedy, a family friend, on the long trip to Sea Girt to observe the transitional ceremonies amid much picture taking and congratulatory exchanges. Time had wrought many changes since 1966; we were much older now, our lad had matured, married with a son of his own, aged 11, who scampered all over taking pictures of his dad; as his proud wife and her parents exuded pleasure over the young boy's enthusiasm.

The paramilitary nature of the ceremonies were impressive as was the Chaplain's benediction and prayer that God's guidance protect these inducted troopers in their assigned duties. The consolidation will augment the numerical strength of the N.J. State Police force by 125 men.

Rank classification differentials between the two consolidation agencies will effect changes in salaries and job classifications with the newly inducted troopers gaining salary increases, although a reduction in rank for superior officers occurred.

## Rec All-Star Soccer Squad Plays Garden

At the invitation of the New York Cosmos, (the Belleville Recreation All-Stars 5th-Division played an exhibition game at Madison Square Garden, New York, on Jan. 25.

The All-Stars were defeated by the Orangeburg Soccer Club of Orangeburg, New York, 5-1, but the score had no bearing on the kids this day.

The All-Stars had the thrill of playing in the most well known sporting arena in the world: Assistant Coach Densley Fletcher, a resident of England, summed it all up, "My friends in England won't

believe I coached here. If your pictures don't come out my friends will hope I'd stayed here."

The coaches and players had a great time. Vinny Farina had a long discussion with Ed Furmani, coach of the Cosmos. I hope Furmani takes Farina's advice. Jeff Durgan, Chico Borja and Hubert Birchammiro all visited the kids in the locker room for pictures and autographs.

As 8 and 9 year olds this thrill will be appreciated in five, 10, 15 years from now when they look back at the pictures and state "I really played there."

## Apicella Just 53 Points Away From State Record

(Continued from page 11.)

come at a time when Apicella could have quit with all the injuries and setbacks this year. She has proven what a tough competitor is all about.

NOTES: Clifford Scott is the number one seed in the ECT, followed by Shabazz, Nutley and Belleville. Feeling here is that Belleville can win this tournament. Only Clifford Scott will pose a big threat and

if Belleville can play its type of game, it can pull it off. Shabazz has won the previous two tournaments, beating Clifford Scott in both finals. Last year's

final saw Shabazz rally from an 18-point, fourth-quarter deficit to win. Scott won the title in 1981, beating East Orange and East Orange won in 1980. Before that, Columbia and Nutley shared center stage.

## BF Goodrich

**XLM H/T™ steel belted radial**  
Excellent traction in  
all-weather conditions,  
including mud and  
snow

**\$45<sup>30</sup>**

(P155/80R13)

BF GOODRICH XLM H/T™ RADIAL

Size	List Price
P165/80R13	47.20
P175/80R13	48.90
P185/80R13	50.10
P175/75R14	50.70
P185/75R14	53.00
P195/75R14	57.40
P205/75R14	59.80
P205/75R15	62.80
P215/75R15	64.30
P225/75R15	67.10
P235/75R15	71.70

- The best steel belted radial passenger tire BF Goodrich ever built!
- Aggressive all-weather tread design for excellent traction, even in mud and snow!
- Two full steel belts, polyester cord, and a continuous-shoulder block tread.

**Made for Small Imports!**  
**GT-200 Steel Belted Radial**

**\$34<sup>30</sup>**

(155SR12)

BF Goodrich GT-200

- Excellent handling, stopping and traction
- Quiet performance and long tread life
- Aggressive tread minimizes hydroplaning and adds to control in wet weather

Size	List Price
145SR13	35.00
155SR13	36.10
165SR13	37.50
175SR14	44.80
185SR14	47.40
165SR15	42.30
175/75R13	41.60
185/75R13	43.10
185/70SR14	48.10
195/75R14	51.50

**Wheel Alignment Special**

**\$19<sup>95</sup>**

You Save \$3.00.

OFFER EXPIRES (INSERT DATE)

PARTS & LABOR

for most American Cars

Four wheel alignment extra.

Other Services Available:  
Brakes, shocks, mufflers, oil,  
lubrication - to make your ride  
smooth and safe.

CALL FOR AN APPOINTMENT



Joe's Alignment Service, Inc.

597 Washington Ave.  
Belleville 751-7433



## H&R BLOCK

**Found  
Amalia  
Bon  
\$528**



In a recent survey of customers who got refunds, we found 3 out of 4 believed H&R Block got them bigger refunds than if they'd prepared their own taxes. 3 out of 4.

**What can we find for you?**

125 Washington Ave., Belleville 751-3836

Open 9 a.m.-8 p.m. weekdays, 9-5 Sat. & Sun.  
Appointments Available MasterCard and Visa Accepted

## Everlasting Roses



This Valentine's Day, romance her with the delicate beauty of the "Miniature Rose" collection from Klementz. A gift with lasting appeal.

Corbo Jewelers proudly offers this exquisite collection of 14 kt. gold overlay jewelry accented with soft shades of pink, yellow, and green. Pins, pendants, and earrings priced from \$25.

Corbo Jewelers...the original family tradition since 1876.

**Corbo Jewelers**

1055 Bloomfield Ave., Clifton, N.J. • 586 Bloomfield Ave., Bloomfield, N.J. • Bergen Mall, Paramus, N.J. • Rockaway Town Square Mall, Rockaway, N.J. • Ocean County Mall, Toms River, N.J. (201) 777-1635 • Also in Yonkers, N.Y.

**Dr. Joseph A. Belfatto**  
D.P.M. A.A.C.F.S.

**SURGEON • PODIATRIST**

Board Certified in Surgery  
Practicing in Belleville  
For Over 25 Years

**Evaluation & Treatment of  
All Ailments of the Foot,  
Nail & Skin Disorders & Diabetic  
Foot Care**

• OFFICE • OUT PATIENT • IN HOSPITAL  
• AMBULATORY CARE  
Surgery for the correction of  
Nails, Corns, Calluses,  
Hammer Toes & Bunions

Medicare & Most Insurances  
Accepted if Applicable  
**CLARA MAASS**

**PROFESSIONAL CENTER**

SUITE 106 HOURS BY APPT. ONLY  
5 FRANKLIN AVE. MON. THRU SAT.  
BELLEVILLE, N.J. NO HOURS WEDNESDAY  
**759-1416**

# Community Bulletin

(Continued from page 4.)

meeting. — 51 Rossmore Pl.

7:30 p.m. Belleville Board of Adjustment public meeting. — Second floor meeting room, 383 Washington Ave.

## TUESDAY, FEB. 14

4 p.m. BHS boys' varsity basketball vs. St. Joseph, home.  
5:30 p.m. BHS boys' J.V. basketball vs. St. Joseph, home.  
Moose Club regular meeting — 22-28 Eugene Place.

8 p.m. Catholic Daughters of America, Court Santa Maria 61. — Knights of Columbus Hall, 94 Bridge St.

6:30 p.m. BHS boys' J.V. basketball vs. Ridgewood, away.  
7 p.m. School 3 Home and School Association's annual card party. — Branch Brook Manor Restaurant, 13 Washington Ave. Dinner and fashion show are included in the \$14 ticket.

7 p.m. Regularly scheduled monthly business meeting of the Board of Trustees of the Belleville Public Library. — 221 Washington Ave.

8 p.m. BHS girls' varsity basketball vs. Ridgewood, home.

8 p.m. BHS boys' varsity basketball vs. Ridgewood, away.

## SATURDAY, FEB. 11

10 a.m. Valentine Day Handicraft. — Belleville Public Library, 221 Washington Ave.

1:30 p.m. Roche Retiree Club will meet. — Hoffmann-La Roche Bldg. 76 auditorium. Featured will be Rev. Paul Friedrich, with a slide program "Enchantment of Africa." Refreshments will be served.

6 p.m. BHS J.V. wrestling vs. Bergen Catholic, away.

7:30 p.m. BHS varsity wrestling vs. Bergen Catholic, away.

8 p.m. Valentine Social sponsored by the Matthew A. Pica Civic and Welfare Association. — Branch Brook Manor, 13 Washington Ave. Tickets are \$20. Please contact Grace Purdue, 482-9656 (9 a.m.-4 p.m.) or 759-6059 after 4 p.m., or Joyce Frade, 759-2850 for tickets and more information.

## SUNDAY, FEB. 12

John J. Carbat Unit 299 third annual cocktail party. Tickets \$1 each. Call Post Home for more information.

3:30 p.m. Dedicatory concert of Bethany Lutheran Church's new Associated Organ Builders' Organ. Concert will be performed by John Rose, former organist at Sacred Heart Cathedral in Newark. — Bethany Lutheran Church, Jaramelon and New streets. Free admission.

## MONDAY, FEB. 13

1 p.m. Senior Citizens' Club sponsored by Essex County Department of Parks. — Belleville Avenue in the park.

BHS bowling vs. Nutley. Call high school for time and location.

8 p.m. Board of Education public business meeting. — School 8, 183 Union Ave.

8 p.m. Knights of Columbus. — 94 Bridge St.

8 p.m. Elks Lodge meeting. — Elks Hall, 254 Washington Ave.

8 p.m. Jr. Woman's Club business

Winter Clearance  
save 33 1/3 to 66 2/3%

## Sportswear

junior career women  
misses  
mary stuart woman  
for the fuller figure

## Dresses

leslie fay  
and many other  
famous brands  
mary stuart woman  
for the fuller figure  
juniors  
misses

## Lingerie

girdles  
bras  
lingerie  
panties  
20 to 50% off

## Coats

furs, such as  
mink  
norwegian  
natural blue fox  
natural fox  
from afghanistan  
dyed blush  
shadow fox  
100% wool coats  
suburban pant coats  
capes for juniors  
misses  
mary stuart woman  
for the fuller figure

## Accessories

handbags • attachés  
jewelry  
winard's  
14 k gold filled  
scarves  
belts at a fraction  
of their cost  
hats  
gloves  
etc.



Children's World  
winter clearance

at least 50% savings

coats • jackets • accessories such as hats •  
handbags • gloves • sox • sportswear for all  
infants • toddlers • boys 4-7 8-12 14-20 • girls 3-6x 7-14 • pre-teens

## Janette Nutley Center

Nutley Center, Nutley • 667-1900 (Convenient rear entrance at Municipal Parking Plaza.)

JNC & JNC The Men's Store charges as well as all other major charges. Shop daily 10 to 5:45, Sat 9:30 to 5:30. Open late Mon. Thurs and Fri

## FOR SALE



Three bedroom Colonial on quiet Bloomfield  
dead end street. Asking in the \$70's.



Third  
River  
Realty

453 Broad St.  
Bloomfield, N.J.  
429-2450

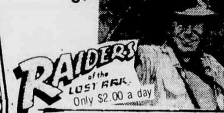
Marcia Gushard - Broker

MEMBER OF BLOOMFIELD, GLEN RIDGE, NUTLEY AND BELLEVILLE BOARD OF REALTORS

## Your Movie Rental Store For '84

Now Playing at the area's No. 1  
Video Movie Rental Store

NOW  
SHOWING



Rent 3 Tapes  
for 2 days ..... \$8

Rent any Tape \$2 per day

- All Ratings G-XXX
- We Rent Video Machines
- We Sell Blank Video Tape.

Now Showing Michael Jackson's "Thriller" and "Dawn  
at the Dead" Pink Floyd's "The Wall"  
Coming Soon: Party's II, Tootsie, Mr. Mom, Class, Cupo  
Why not try out that new Video Recorder  
Santa left you by renting a movie from  
the area's #1 Movie Rental Store.

## Instant Video

186 Main Avenue  
Passaic Park • 778-4751

Open Daily till 9 p.m.



R-11 3 1/2x15	13¢
UNFACED	per sq. ft.
FOIL-FACED	17¢
R-11 3 1/2x23	17¢
FOIL-FACED	17¢
R-19 6x15'	24 1/2¢
UNFACED	
FOIL-FACED	28¢
R-19 6x23	28¢
FOIL-FACED	28¢
R-25 8x15	34¢
8x23	
UNFACED	
ATTIC BLANKET	
R-30 9x16	
KRAFT-FACED	42¢

## BE A WINNER IN THE WINTERGAME

INSULATE NOW! Get the jump on high energy costs!



Install Owens-Corning Pink Fiberglas Insulation

**FREE!** OFFICIAL '84  
OLYMPIC TRAINING SHOES BY  
CONVERSE WHEN YOU BUY 10  
OR MORE ROLLS OF PINK  
FIBERGLAS INSULATION  
A \$24.95 VALUE



R-Value! The R-Value of insulation represents  
heat transfer. The higher the R-Value, the  
greater the insulating quality.



## HURRY!! CIRCULAR SALE



## BLOOMFIELD

743-7300 438 Broad St.

now  
till  
Feb. 19th  
Hours: Mon. 7:30-8:00  
Tues-Sat 7:30-4:30  
Sun. 9:00-3:00

Not responsible for typographical errors. We reserve the right to limit quantities. All items at picked-up prices while  
quantities last. Pictures do not necessarily depict advertised items. All prices cash & carry. This offer expires Feb. 28, 1984.

# ALL STORES ARE OPEN

Check your local Grand Union for exact store hours, or call 800-221-1835.

## EXTRA VALUE!

**Super GRAND UNION Coupon**  
**WITH THIS COUPON**  
**\$100 OFF**  
 (797) THE PURCHASE OF \$10.00 OR MORE (EXCEPT ITEMS PROHIBITED BY LAW).  
 Coupon good at any Grand Union Market  
 LIMIT ONE PER FAMILY.  
 Effective Sunday, Feb. 5 thru Saturday, Feb. 11.

Fully Cooked - Water Added  
**Smoked Ham**  
 Shank End  
**89¢** Lb.  
 Butt End Smoked Ham **99¢**  
 Some slices removed.

Assorted Flavors  
 Louis Sherry **Ice Cream**  
 Half Gal. Cont.  
**199¢**

**Super GRAND UNION Coupon**  
 Mt. Dew, Pepsi Light or Regular or Diet  
**Pepsi-Cola or Pepsi-Free**  
 2-Liter Btl.  
**79¢**  
 (779) With This Coupon And Purchase Of \$7.50 Or More Coupon Good Feb. 5 Thru Feb. 11. Limit One Coupon Per Customer.

Sour Cream or BBQ (6 1/2 -oz.) or Natural  
**Wise Ridgies** Potato Chips  
 7-oz. Pkg.  
**99¢**

Italian Style - Hot or Sweet  
**Pork Sausage**  
 Any Size Pkg.  
**129¢** Lb.

**Super GRAND UNION Coupon**  
 Corn Oil - Regular, Unsalted or Light  
**Fleischmann's Margarine**  
 1-Lb. Pkg. Qtrs.  
**59¢**  
 (781) With This Coupon And Purchase Of \$7.50 Or More Coupon Good Feb. 5 Thru Feb. 11. Limit One Coupon Per Customer.

California - U.S. No. 1  
**Iceberg Lettuce**  
 Head  
**49¢**

Regular - Value Pack  
 Nabisco **Ritz Crackers**  
 12-oz. Pkg.  
**99¢**

**Super GRAND UNION Coupon**  
 Traditional or Homestyle Varieties  
**Ragu Spaghetti Sauce**  
 15 1/2 -oz. Jar  
**49¢**  
 (775) With This Coupon And Purchase Of \$7.50 Or More Coupon Good Feb. 5 Thru Feb. 11. Limit One Coupon Per Customer.

### THE BUTCHER BLOCK

U.S.D.A. Choice Beef Loin  
**Sirloin Steak**  
 Full Cut with Tenderloin Lb.  
**239¢**

Gov't. Grade 'A' Fresh  
**Holly Farms Roasting Chicken**  
 7 to 7 Lbs. Lb.  
**69¢**

**Porterhouse Steak** **329¢** Lb.  
 U.S.D.A. Choice Beef Loin - or T Bone Steak Lb.  
**Shell Steak** **329¢** Lb.  
 U.S.D.A. Choice Beef Loin - Bone In with Tail Lb.  
**Sirloin Steak** **329¢** Lb.  
 U.S.D.A. Choice - Boneless Beef Loin Lb.

**Smoked Picnic** **99¢** Lb.  
 Rostock Pork Shoulder - Water Added Lb.  
**Boneless Ham** **239¢** Lb.  
 West Virginia Half - Fully Cooked Water Added Lb.  
**Pork Butts** **199¢** Lb.  
 Boneless Pork Shoulder - Water Added Lb.

**Family Pack Savings**  
 SAVE 10¢ A LB. ON PKGS. OF 3 LBS. OR MORE  
**Chuck for Stew** **199¢** Lb.  
 U.S.D.A. Choice - Boneless Beef Cubes Ea. Lb.  
**Pork Chops** **159¢** Lb.  
 Combo - Loin, Rib End and Center Cut Ea. Lb.

**Wholesale Savings**  
**Whole Pork Loin** **167¢** Lb.  
 Fresh Western - Untrimmed 12 1/2 Lbs. Custom cut into chops and/or roasts.  
**Fillet Mignon** **397¢** Lb.  
 U.S.D.A. Choice - Boneless Beef Tenderloin Lb.  
 Whole Untrimmed 5 1/2 Lbs. Cry-O-Vac. Custom cut.

### CORNER DELI

**Pastrami** Deli Sliced **139¢** Half Lb.  
 or By The Piece  
**Cole Slaw** **59¢** Lb.  
 Made with Hellmann's Mayonnaise  
**Cooked Ham** **189¢** Half Lb.  
 Russert's Lit Salt - Water Added

### THE BIG FREEZER

**Morton's Chicken** **129¢** 13-oz. Pkg.  
 Fried Entree  
**Chicken** **89¢** For 8-oz. Pkg.  
 or Macaroni & Cheese  
**Sara Lee** **279¢** 1-Lb. 4-oz. Pkg.  
 or Fudge Nut Torte (15 1/2 -oz.)

### PRODUCE

U.S. No. 1  
**All Purpose Potatoes**  
 10-Lb. Bag  
**159¢**

**Oranges** **8.139¢** For Large 88 Size  
 California Novel  
**Broccoli Raab** **99¢** Lb.  
 Fresh Western  
**Seedless Grapes** **149¢** Lb.  
 White - Mature Fruits from South America Lb.  
**Yellow Turnips** **25¢** Lb.  
 Fresh  
**Grapes** **149¢** Lb.  
 Red Flame Seedless  
 Grapes That Go Crumminch  
**Red Onions** **69¢** Lb.  
 Fresh - U.S. No. 1

### GROCERIES

Original or Cinnamon  
**Quaker Life Cereal**  
 1-Lb. 4-oz. Pkg.  
**149¢**

Chunk Style - In Oil or Water  
**Chicken of the Sea Light Tuna**  
 6 1/2 -oz. Can  
**69¢**

**Noodles** **69¢** 1-Lb. Pkg.  
 Penn Dutch  
 Fine, Medium, Broad or Homestyle  
**Coca-Cola** **179¢** 12-oz. Cans  
 6-Pack Reg. or Diet Coke, Tab or Dr. Pepper  
**Peaches** **69¢** 1-Lb. Cont.  
 Diet Delight  
 Yellow Cling, Slices or Halves  
**Lysol** **79¢** 1-Pt. Cont.  
 Bowl Cleaner  
**Cling Free** **249¢** Pkg. of 54 Sheets  
 Fabric Softener  
**Dow Freezer Bags** **119¢** Ziploc  
 10-oz. Pkg. of 20

**H-O Quick Oats** **89¢** 1-Lb. Pkg.  
 or Instant Oats  
**Buitoni Pasta** **55¢** 8-oz. Pkg.  
 Spinach Linguini, Twists, Shells, Elbows or Ziti  
**Wish-Bone Dressing** **69¢** 8-oz. Btl.  
 Asst. Varieties, Except Blue Cheese  
**Wine Vinegar** **99¢** 1-Pt. 9-oz. Btl.  
 Progresso - Pure  
**Dishwasher All** **299¢** 4-Lb. 1-oz. Pkg.  
 For Automatic Dishwashers  
**Final Touch** **99¢** 1-Qt. 1-oz. Cont.  
 Fabric Softener

### DATE-LINE DAIRY

**Casino Cheese** **139¢** 8-oz. Pkg.  
 Kraft - Assorted Chunk Varieties  
**Velveeta Slices** **179¢** 12-oz. Pkg.  
 Kraft - Indiv. Wrap  
**Cheese Slices** **149¢** 10-oz. Pkg.  
 Weight Watchers - Colored

### FAMILY NEEDS

**Cheese Sticks** **149¢** 8-oz. Pkg.  
 Weight Watchers - Natural  
**Provolone** **139¢** 6-oz. Pkg.  
 Domestic Sliced or Mozzarella  
**Jarlesberg Cheese** **169¢** 6-oz. Pkg.  
 Sargento - Sliced

### DATE-LINE DAIRY

**Baby Shampoo** **139¢** 1-Pt. Btl.  
 Grand Union  
**Mr. Coffee Filters** **49¢** Pkg. of 50  
 Original  
**Reader's Digest** **150¢** February Issue - Checkout Special  
 Each

**GRAND UNION Coupon**  
 All Temperature  
**Cheer Laundry Detergent**  
 2-1/2 1-oz. Pkg.  
**199¢**  
 Coupon Good Feb. 5 Thru Feb. 11. Limit One Coupon Per Customer.

**GRAND UNION Coupon**  
**15¢ Off**  
 (765) With This Coupon And Purchase Of One 1-Qt. Jar, Kraft  
**Miracle Whip Salad Dressing**  
 Coupon Good Feb. 5 Thru Feb. 11. Limit One Coupon Per Customer.

**GRAND UNION Coupon**  
**10¢ Off**  
 (767) With This Coupon And Purchase Of One 97-Sheet Roll - Colors, Decorator or Designer  
**Viva Jumbo Roll Paper Towels**  
 Coupon Good Feb. 5 Thru Feb. 11. Limit One Coupon Per Customer.

**GRAND UNION Coupon**  
 For Automatics  
**Cascade Dishwasher Detergent**  
 4-Lb. 1-oz. Pkg.  
**299¢**  
 With This Coupon  
 Coupon Good Feb. 5 Thru Feb. 11. Limit One Coupon Per Customer.

**GRAND UNION Coupon**  
**15¢ Off**  
 (773) With This Coupon And Purchase Of One Pkg. of 4 - 40, 60, 75 or 100 Watt  
**GE Soft White Light Bulbs**  
 Coupon Good Feb. 5 Thru Feb. 11. Limit One Coupon Per Customer.

**CHECK YOUR LOCAL GRAND UNION FOR STORE HOURS**  
**GRAND UNION**  
 Prices effective Sunday, Feb. 5 thru Saturday, Feb. 11 at all Grand Union stores in New Jersey, Rockland and Orange Counties. In order to assure a sufficient quantity of sale items for all our customers we reserve the right to limit sales to 3 packages of any item unless otherwise noted. Not responsible for typographical errors. For store information call our office in Paramus (201) 262-9200.  
**CHECK YOUR LOCAL GRAND UNION FOR STORE HOURS**



# CLASSIFIED ADS sure to get results

In The Nutley Sun, Belleville Times and Bloomfield Life

## 667-3000

DEADLINE TUES. 12 NOON

"BE MY VALENTINE"

CHAR,  
THANKS FOR SHARING YOUR LIFE WITH ME.  
I'LL ALWAYS BE HERE FOR YOU. I LOVE YOU.  
ALL MY LOVE FOREVER,  
AND ALWAYS,  
LISA

ELMO,  
THANKS FOR YOUR SPECIAL FRIENDSHIP-MAY  
IT ALWAYS LAST.

BUNS

JIMMY,  
THANK YOU FOR BEING THE SPECIAL MAN IN  
MY LIFE.

LOVE ALWAYS,  
"TWEETY"

MAMA,  
THE JR. BEAR THINKS YOU'RE GREAT. BEAR  
HUGS. BEAR HUGS. GRRRRR....

VIN,  
I LOVE YOU VERY MUCH AND I KNOW ONE  
DAY WE'LL BE TOGETHER.

BARB  
P.S. I BELIEVE THAT.

ANNOUNCEMENTS

ANNOUNCEMENTS

### MARY'S THEATER PARTIES

FOR GROUPS & INDIVIDUALS

Feb. 24 "Pegasus" Meadowlands  
Feb. 26 "Joan Rivers" Resorts AC  
Feb. 28 "Resorts AC" \$10.00, \$20.00 & \$50.00 returned.  
Mar. 2 "Top Dance Kid"  
Mar. 11 "Tom Jones" Resorts AC  
Mar. 15 "The Risk" (Lia Minelli)  
Mar. 18 "Reddy Dangerfield" Resorts AC  
Above include orchestra seat, dinner, taxes & tip to dinner.  
20 PASSENGER LUXURY COACHES TO ATLANTIC CITY  
998-1268

### "AN AFFAIR TO REMEMBER"

GRUNA SELBY  
ORCHESTRAS

201-666-7786 OR 201-667-2196

### WE WILL PAY FOR YOUR OPINION!

Earn extra money by testing Health and Beauty Aides in your home. Your opinion is important to the product manufacturers and will earn you CASH.

Call now and start on our Select Product Testing Panel. No fee required.  
call EVALUATIONS, Inc. 743-5800

### NOVENA TO ST. JUDE

This novena has never been known to fail. This novena must be said for 9 consecutive days. Publication must be promised.  
O Holy St. Jude, Apostle and Martyr, great in virtue and rich in miracles, near kingdom of Jesus Christ, faithful intercessor of all who invoke you, special patronage in time of need. I pray to you, I have recourse from the depths of my heart and humbly beg to whom God has given great power to come to my assistance. Help me in my present urgent petition. In return, I promise to make your name known and call you to be invoked. St. Jude, pray for all who invoke your aid.  
Ann. Say 3 Our Father's, 3 Hail Mary's and 3 Gloria's. B.D.

### PROFESSIONAL TYING

WE TIE EVERYTHING PROMPT AND ACCURATE. CALL 998-8449 OR 438-0310

### 1975 PLYMOUTH FURY

360 V8 Air Cond. Synth. Stereo. 68,000 mi. Excellent condition. \$1900. 198A. 661-0684

### 76 MONTE CARLO

Silver, P.S. P.B. Air, AM/FM stereo. Vinyl roof. 45,000 mi. Excel. cond. \$4,000. or best offer. 667-8861

### 1979 SUNBIRD

27,000 miles. GOOD GAS MILEAGE. MINT COND. MUST SEE. ASKING \$2500. CALL 238-5149 OR 235-0398 AFTER 6 PM

### 1977 PINTO STATION WAGON

V6 30250 miles. R&H, power brakes & steering, automatic, trans, air condition. 2 snow tires on wheels. \$2200. Call 759-8687

### 1980 MONTE CARLO

Velour, A/C, P.M. 100 wheel, AM/FM tape. \$5,000. mi. Top condition. \$4,000. or best offer. 429-9618

### 1976 AUDI 100 LS

4 dr. Brown, A/C, P.S. P.B. AM/FM Cassette. With snow. As is. \$2500. Nutley. 667-7817

### 1968 DODGE CHARGER

P.S. & GOOD TIRES. NEW BRAKES, REBUILT TRANS. GOOD RUNNING COND. NEEDS BODY WORK. 667-2156

### SEWING, HEMMING & ALTERATION

REASONABLE RATES. CALL 667-3485

### PROFESSIONAL TYING

WE TIE EVERYTHING PROMPT AND ACCURATE. CALL: 998-8449 OR 438-0310

### AUTOMOTIVE

### AUTOMOTIVE

### AUTOMOTIVE

### AUTOMOTIVE

### AUTOMOTIVE

### AUTOMOTIVE

### AUTOMOTIVE

### AUTOMOTIVE

### AUTOMOTIVE

### AUTOMOTIVE

### AUTOMOTIVE

### AUTOMOTIVE

### AUTOMOTIVE

### AUTOMOTIVE

### AUTOMOTIVE

### AUTOMOTIVE

### AUTOMOTIVE

### AUTOMOTIVE

### AUTOMOTIVE

### AUTOMOTIVE

### AUTOMOTIVE

### AUTOMOTIVE

### AUTOMOTIVE

### AUTOMOTIVE

### AUTOMOTIVE

### AUTOMOTIVE

### AUTOMOTIVE

### AUTOMOTIVE

### AUTOMOTIVE

### AUTOMOTIVE

### AUTOMOTIVE

### AUTOMOTIVE

### AUTOMOTIVE

### AUTOMOTIVE

### AUTOMOTIVE

### AUTOMOTIVE

### AUTOMOTIVE

### AUTOMOTIVE

### AUTOMOTIVE

### AUTOMOTIVE

### AUTOMOTIVE

### AUTOMOTIVE

### AUTOMOTIVE

### AUTOMOTIVE

### AUTOMOTIVE

### AUTOMOTIVE

### AUTOMOTIVE

### AUTOMOTIVE

### AUTOMOTIVE

### AUTOMOTIVE

### AUTOMOTIVE

### AUTOMOTIVE

### AUTOMOTIVE

### AUTOMOTIVE

### AUTOMOTIVE

### AUTOMOTIVE

### AUTOMOTIVE

### AUTOMOTIVE

### AUTOMOTIVE

### AUTOMOTIVE

### AUTOMOTIVE

### AUTOMOTIVE

### AUTOMOTIVE

### AUTOMOTIVE

### AUTOMOTIVE

### AUTOMOTIVE

### AUTOMOTIVE

### AUTOMOTIVE

### AUTOMOTIVE

### AUTOMOTIVE

### AUTOMOTIVE

### AUTOMOTIVE

### AUTOMOTIVE

### AUTOMOTIVE

### AUTOMOTIVE

### AUTOMOTIVE

### AUTOMOTIVE

### AUTOMOTIVE

### AUTOMOTIVE

### AUTOMOTIVE

### AUTOMOTIVE

### AUTOMOTIVE

### AUTOMOTIVE

### AUTOMOTIVE

### AUTOMOTIVE

### AUTOMOTIVE

### AUTOMOTIVE

### AUTOMOTIVE

### AUTOMOTIVE

### AUTOMOTIVE

### AUTOMOTIVE

### AUTOMOTIVE

### AUTOMOTIVE

### AUTOMOTIVE

### AUTOMOTIVE

### AUTOMOTIVE

### AUTOMOTIVE

### AUTOMOTIVE

### AUTOMOTIVE

### AUTOMOTIVE

### AUTOMOTIVE

### AUTOMOTIVE

### AUTOMOTIVE

### AUTOMOTIVE

### AUTOMOTIVE

### AUTOMOTIVE

### AUTOMOTIVE

### AUTOMOTIVE

### AUTOMOTIVE

### AUTOMOTIVE

### AUTOMOTIVE

### AUTOMOTIVE

### AUTOMOTIVE

### AUTOMOTIVE

### AUTOMOTIVE

### AUTOMOTIVE

### AUTOMOTIVE

### AUTOMOTIVE

### AUTOMOTIVE

### AUTOMOTIVE

### AUTOMOTIVE

### AUTOMOTIVE

### AUTOMOTIVE

### AUTOMOTIVE

### AUTOMOTIVE

### AUTOMOTIVE

### AUTOMOTIVE

### AUTOMOTIVE

### AUTOMOTIVE

### AUTOMOTIVE

### AUTOMOTIVE

### AUTOMOTIVE

### AUTOMOTIVE

### AUTOMOTIVE

### AUTOMOTIVE

### AUTOMOTIVE

### AUTOMOTIVE

### AUTOMOTIVE

### AUTOMOTIVE

### AUTOMOTIVE

### AUTOMOTIVE

### AUTOMOTIVE

### AUTOMOTIVE

### AUTOMOTIVE

### AUTOMOTIVE

### AUTOMOTIVE

### AUTOMOTIVE

### AUTOMOTIVE

### AUTOMOTIVE

### AUTOMOTIVE

### AUTOMOTIVE

### AUTOMOTIVE

### AUTOMOTIVE

### AUTOMOTIVE

### AUTOMOTIVE

### AUTOMOTIVE

### AUTOMOTIVE

### AUTOMOTIVE

### AUTOMOTIVE

### AUTOMOTIVE

### AUTOMOTIVE

### AUTOMOTIVE

### AUTOMOTIVE

### AUTOMOTIVE

### AUTOMOTIVE

### AUTOMOTIVE

### AUTOMOTIVE

### AUTOMOTIVE

### AUTOMOTIVE

### AUTOMOTIVE

### AUTOMOTIVE

### AUTOMOTIVE

### AUTOMOTIVE

### AUTOMOTIVE

### AUTOMOTIVE

### AUTOMOTIVE

### AUTOMOTIVE

### AUTOMOTIVE

### AUTOMOTIVE

### AUTOMOTIVE

### AUTOMOTIVE

### AUTOMOTIVE

### AUTOMOTIVE

### AUTOMOTIVE

### AUTOMOTIVE

### AUTOMOTIVE

### AUTOMOTIVE

### AUTOMOTIVE

### AUTOMOTIVE

### AUTOMOTIVE

### AUTOMOTIVE

### AUTOMOTIVE

### AUTOMOTIVE

### AUTOMOTIVE

### AUTOMOTIVE

### AUTOMOTIVE

### AUTOMOTIVE

### AUTOMOTIVE

### AUTOMOTIVE

### AUTOMOTIVE

### AUTOMOTIVE

### AUTOMOTIVE

### AUTOMOTIVE

### AUTOMOTIVE

### AUTOMOTIVE

### AUTOMOTIVE

### AUTOMOTIVE

### AUTOMOTIVE

### AUTOMOTIVE

### AUTOMOTIVE

### AUTOMOTIVE

### AUTOMOTIVE

### AUTOMOTIVE

### AUTOMOTIVE

### AUTOMOTIVE

### AUTOMOT

MISC. SERVICES

**SEWING MACHINE REPAIRS**  
ALL MAKES  
HOME SERVICE  
FREE ESTIMATES  
30 YEARS EXPERIENCE  
CALL 484-5522

APPLIANCE REPAIRS

We repair refrigerators, freezers, ranges, wall ovens, washer & dryers.  
**ALL MAKES & MODELS**  
CALL VINNIE  
751-5148 or 759-4230  
7 days

HANDYMAN

**WHY PAY MORE**  
Home Repairs  
Roofs, Gutters  
Painting, Windows etc.  
Free Estimates 872  
"CALL JOE" 759-0724

REPAIR SERVICE

ON ALL WASHERS, DRYERS & DISHWASHERS  
SPECIALIZING IN GE APPLIANCES  
CALL P. H. WASHERS  
667-1565 3/15 667-1150

MOVING & STORAGE

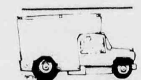
**NORTHERN VAN LINES**  
QUALITY MOVING FOR OVER 20 YEARS  
ALL FURNITURE PADDED  
LOCAL AND SHORE TRIPS  
CALL 743-3293  
CALL RAY  
INSURED PULP. \$58

PAUL'S MOVING & STORAGE

Local & Long Distance Packing & Light Deliveries  
LOW RATES  
675-6440

N.J. LOCAL MOVER

MOVE ANYTHING ONE PIECE OR FULL LOAD  
FOR FREE ESTIMATE  
CALL 478-8685



MAASS MOVERS

661-2528  
RESIDENTIAL MOVERS  
SERVING  
ALL OF NEW JERSEY  
LOCAL & LONG DISTANCE  
INSURED MOVING & STORAGE  
CALL 67-49

A-2 STORAGE CO.

CHEAP RATES  
No Job Too Big or Too Small  
24 Hour Service  
CALL 676-1833

F & J MOVING & STORAGE CO.

Local & Long Distance  
Fully Insured  
Call for Free Estimate!  
Joe Cucuzza 751-2143

A. ABLE Moving & Storage

Lowest rates in town  
Anywhere from N.Y. to N.J.  
Also Sundays  
Call anytime  
943-2026

MONTCLAIR & NEW YORK EXPRESS

**MOVING & STORAGE**  
Experienced men  
Very low rates  
Fully insured  
N.J. Lic. 184  
Established in 1910  
226-7579 or 226-7921

C & W STORAGE

24 HOUR SERVICE  
FULLY INSURED  
CALL 676-8830

CHILD JOBS

HANDYMAN

PAINTING  
CLEANING  
WINDOW WASHING  
NO JOB TOO SMALL  
NO CALL AFTER 5 P.M.  
759-1467

INTERIOR DECORATORS

SHOP AT HOME SERVICE

KATALIN'S

INTERIOR DECORATORS

RESIDENTIAL COMMERCIAL CONTRACTING

FREE ESTIMATES  
779-4627

EXPERIENCED HANDYMAN

With the lowest possible rate.  
Does painting, wallpapering, plastering, Ceramic tile repair & replaced. Small carpentry jobs. Any odd jobs.  
Call 991-5090

CARPETING & LINOLEUM

REALLY RUGS CARPETING & LINOLEUM SALES

"Specializing in Repairs"  
Free Estimates  
Shop At Home Service  
Call: 759-1123

PAINTING

D & D PAINTING

Quality service. Available at all times.  
We also remove wallpaper free estimate.  
NO ONE CAN BEAT OUR PRICES.  
Call anytime  
667-1732

PAINTING

PAINTING

PAINTING

PAINTING

PAINTING

PAINTING

PAINTING

PAINTING

PAINTING

PAINTING

PAINTING

PAINTING

PAINTING

PAINTING

PAINTING

PAINTING

PAINTING

PAINTING

PAINTING

PAINTING

PAINTING

PAINTING

PAINTING

PAINTING

PAINTING

PAINTING

PAINTING

PAINTING

PAINTING

PAINTING

PAINTING

PAINTING

PAINTING

PAINTING

PAINTING

PAINTING

PAINTING

PAINTING

PAINTING

PAINTING

PAINTING

PAINTING

PAINTING

PAINTING

PAINTING

PAINTING

PAINTING

PAINTING

PAINTING

PAINTING

PAINTING

PAINTING

PAINTING

PAINTING

PAINTING

PAINTING

PAINTING

PAINTING

PAINTING

**PAINTING**  
Interior • Exterior  
FREE ESTIMATES  
CALL CHARLIE  
667-2322

A & P PAINTING

QUALITY INTERIOR WORK  
LOW PRICES. FREE ESTIMATE.  
340-2452 or 676-4906

ORAZIO PAINTING

Wallpapering  
Interior • Exterior  
Fully Insured. Free Estm.  
No Job Too Small  
471-9395

LARRY FONDI PAINTING

PLASTER REPAIRING  
WALLPAPERING  
FREE ESTIMATE  
998-4750

PAINTERS PLUS CO.

Interior & Exterior Painting  
Wallpapering & Light Carpentry  
Linoleum & tile installed & repaired.  
Free Estimates  
CALL RICHIE  
after 6PM  
481-6660

PAINTING

PAINTING

PAINTING

PAINTING

PAINTING

PAINTING

PAINTING

PAINTING

PAINTING

PAINTING

PAINTING

PAINTING

PAINTING

PAINTING

PAINTING

PAINTING

PAINTING

PAINTING

PAINTING

PAINTING

PAINTING

PAINTING

PAINTING

PAINTING

PAINTING

PAINTING

PAINTING

PAINTING

PAINTING

PAINTING

PAINTING

PAINTING

PAINTING

PAINTING

PAINTING

PAINTING

PAINTING

PAINTING

PAINTING

PAINTING

PAINTING

PAINTING

PAINTING

PAINTING

PAINTING

PAINTING

PAINTING

PAINTING

PAINTING

PAINTING

PAINTING

PAINTING

PAINTING

PAINTING

PAINTING

PAINTING

PLUMBING & HEATING

PLUMBING & HEATING

PLUMBING & HEATING

PLUMBING & HEATING

PLUMBING & HEATING

PLUMBING & HEATING

PLUMBING & HEATING

PLUMBING & HEATING

PLUMBING & HEATING

PLUMBING & HEATING

PLUMBING & HEATING

PLUMBING & HEATING

PLUMBING & HEATING

PLUMBING & HEATING

PLUMBING & HEATING

PLUMBING & HEATING

PLUMBING & HEATING

PLUMBING & HEATING

PLUMBING & HEATING

PLUMBING & HEATING

PLUMBING & HEATING

PLUMBING & HEATING

PLUMBING & HEATING

PLUMBING & HEATING

PLUMBING & HEATING

PLUMBING & HEATING

PLUMBING & HEATING

PLUMBING & HEATING

PLUMBING & HEATING

PLUMBING & HEATING

PLUMBING & HEATING

PLUMBING & HEATING

PLUMBING & HEATING

PLUMBING & HEATING

PLUMBING & HEATING

PLUMBING & HEATING

PLUMBING & HEATING

PLUMBING & HEATING

PLUMBING & HEATING

PLUMBING & HEATING

PLUMBING & HEATING

PLUMBING & HEATING

PLUMBING & HEATING

PLUMBING & HEATING

PLUMBING & HEATING

PLUMBING & HEATING

PLUMBING & HEATING

PLUMBING & HEATING

PLUMBING & HEATING

PLUMBING & HEATING

PLUMBING & HEATING

PLUMBING & HEATING

PLUMBING & HEATING

PLUMBING & HEATING

PLUMBING & HEATING

PLUMBING & HEATING

PLUMBING & HEATING

PLUMBING & HEATING

PLUMBING & HEATING

PLUMBING & HEATING

PLUMBING & HEATING

PLUMBING & HEATING

PLUMBING & HEATING

PLUMBING & HEATING

PLUMBING & HEATING

PLUMBING & HEATING

PLUMBING & HEATING

PLUMBING & HEATING

PLUMBING & HEATING

PLUMBING & HEATING

PLUMBING & HEATING

PLUMBING & HEATING

PLUMBING & HEATING

PLUMBING & HEATING

PLUMBING & HEATING

PLUMBING & HEATING

PLUMBING & HEATING

PLUMBING & HEATING

PLUMBING & HEATING

PLUMBING & HEATING

PLUMBING & HEATING

PLUMBING & HEATING

PLUMBING & HEATING

PLUMBING & HEATING

PLUMBING & HEATING

PLUMBING & HEATING

PLUMBING & HEATING

PLUMBING & HEATING

PLUMBING & HEATING

PLUMBING & HEATING

PLUMBING & HEATING

PLUMBING & HEATING

PLUMBING & HEATING

PLUMBING & HEATING



## HELP WANTED

## TELEPHONE SALES

Hard worker with excellent speaking voice wanted for local newspaper group. Flexible hours.

Call Mr. de Antoni at  
667-2700

DO YOU LIKE PEOPLE?  
DO YOU INTERESTED IN KEEPING FIT?  
DO YOU NEED MONEY?  
DO YOUR WORKING HOURS LIMITED?  
DO YOU HAVE A CAR?

If you answer YES. DO YOUR THING! USE YOUR PERSONALITY TO SELL GROUP MEMBERSHIPS FOR OUR HEALTH CLUB IN NORTHERN NEW JERSEY. (Protected Territory)

Ask for Charlie or Dana  
201-933-4100

## PRESSMAN

OPERATE 1250 MULTI W/151 HEAD, DIDDLE WEB PRESS, EXP. W/CAMERA PREPARATION OF PLATES. LIBERAL COMPANY BENEFITS. GOOD STARTING SALARY. SUBMIT RESUME W/SALARY DESIRED TO:  
BOX 524, KEARNY, NJ 07032

## CLERK - TYPIST

Immediate opening available offering interesting diversified duties. Liberal company benefits. Steady helpful. Good starting salary. Call write or apply:

PERSONNEL DEPT. - 997-3000

Goody Products, Inc.  
969 Newark Turnpike (Harrison Ave.)  
Kearny, NJ 07032

## TELEPHONE SALES &amp; CLERICAL

FOR LOCAL NEWSPAPER. 2 DAYS PER WEEK. MONDAY AND TUESDAY. 9:50 A.M. MUST BE ABLE TO TYPE. MATURE PERSON PREFERRED. CALL BETWEEN 9-3 P.M.

MISS RICH 667-3000

## PART TIME

## TELEPHONE WORK

Client office needs reliable person with good speaking voice. Will train. Hours avail. 9pm to 5pm.  
Call 778-3766

## HELP WANTED

## FOR MACHINE SHOP WORK

Call 759-0959

## LOCAL COSMETIC CO.

Looking for temporary hair workers. Applications being accepted now between 9 & 5.

48 SELLERS STREET  
KEARNY, N.J.

## BANKING

## FULL-TIME TELLERS

Nutley

\$165 to \$225 a week, depending on experience. If you have teller or cashier experience, you have a head start. If not, we'll train you to be a bank teller. Generous company benefits and opportunity to advance.

## PART-TIME TELLERS

Nutley

Good if figures? Need experience? No experience needed to apply for one of these part-time permanent teller openings. You must be willing to work up to 10 hours a week.

Call Miss Vallee at  
(201) 628-5818

## ANCHOR

## SAVINGS BANK

FSB, NJ

Equal opportunity employer M/F

## SECRETARY

## BLOOMFIELD CREDIT

## PROVIDENT SAVINGS BANK

## MORTGAGE DEPT.

Good skills required. Stereo-typing-communications. Previous mortgage experience helpful. Competitive salary. Excellent benefits package. Pleasant working conditions. Call Personnel Dept. 434-0772 Ext 305

We are an equal opportunity employer M/F

## PART TIME OR FULL TIME

Easy sales when you give customers a chance to win up to \$200.

WE'LL GIVE YOU A CHANCE  
Call 201-773-8135

## CLERK TYPIST

Expanding Belleville area manufacturing concern has immediate need for a good typist with several years experience to perform clerical duties on. Purchasing and Personnel Department.

We offer pleasant working conditions and an excellent benefits package. Please submit letter or resume stating background and salary requirements to:

P.O. BOX 74  
BELLEVILLE, N.J. 07019

An Equal Opportunity Employer M/F

## COMPUTER CONSOLE

## OPERATOR TRAINEE

We are seeking an individual with the desire to learn the operation of computer, IBM system 36. Some data entry experience helpful. We are willing to train. Duties will also involve word processing on IBM data writer. Full benefits. Call 748-5089 for appt.

NEW-TONE ELECTRONIC, INC.  
44 FARMAN ST.  
BLOOMFIELD

## ACCOUNTING

## CLERK

Expanding North Jersey manufacturer in the North New Jersey area seeks an addition to their Accounting Department to assist in accounts payable, cash deposits and general accounting procedures. To qualify for this position, candidates should have 1-2 years experience, a knowledge of typing, and basic accounting practices and procedures.

We offer a good starting salary and benefits package. Kindly submit resume attention of Personnel Dept.

PO BOX 74  
BELLEVILLE, NJ 07019

An Equal Opportunity Employer M/F

## CLERICAL

Full time positions now exist for full clerical, clerk typist, and control clerk in data processing environment. Requires attentiveness to detail, answering phones and helpful. Clerk typist candidates must type 50 WPM and have pleasant telephone manner.

We offer competitive salary and benefits. Convenient Clifton location. Inquire Personnel Dept.

778-5588  
Equal Opportunity Employer M/F

## TELLER

## WANTED

EXPERIENCED LIBERAL BENEFITS  
Call 643-5700  
THOMAS MANN JR.

## MEDICAL TYPIST/RECEPTIONIST

Duties will include posting patient accounts, filing, typing from dictation machine, answering phones and appt. scheduling.

Send resume to:  
The Belleville Times  
Box 89  
Belleville, N.J. 07019

BOOST YOUR INCOME!!  
START PROFITABLE HOME BUSINESS. NUTRITIONAL FIELD. NO EXPERIENCE. SMALL START UP INVESTMENT. WE TURN "NO" INTO "FREE".  
CALL KAY 994-2492

## CAFETERIA

## WORKER

Part Time. 10:30AM-3PM. CASH REGISTER. EXPERIENCE A MUST.

Permanent position for general helper in industrial cafeteria. Full time. Training program. No experience necessary. Call 746-1131

Call 746-1131  
Walace & Tienan Dr.  
PENNAWAT CORPORATION  
25 Main St. Belleville  
An equal opportunity employer

## REAL ESTATE

## SALES PERSON

WE ARE MEMBERS OF 2 M.L.S. CALL MOSCARA REALTORS  
667-1732

## PART TIME

## JUNIOR SECRETARY

9AM TO 3 PM

This is an ideal position for an individual, who would like to get involved in a meaningful position, on a part time basis.

Job requirements include a typing speed of 35-45wpm, good attention to detail and some prior office experience, preferably as a secretary.

If you would like to work in pleasant surroundings, make a good salary, and earn prorated vacation, holiday and sick pay, and the opportunity to grow with our company, please call our personnel dept.

201-481-4800, EXT 324

## THE HARTZ

## MOUNTAIN

## CORPORATION

700 SOUTH 4TH ST.  
HARRISON, N.J.

Equal Opportunity Employer M/F

## LEGAL SECRETARY

For congenial downtown Newark law firm. Hours 9 to 5. 25 hr. week. Type 75 words per dictaphone. Very diversified. Call 9 to 5pm.

642-5008, Ext. 26

## GENERAL OFFICE HELP

Phone work, filing, office phone, etc. Hours flexible. Call 667-8114

## HEAD CHEF

EXPERIENCED PREFERRED IN CONTINENTAL AMERICAN CUISINE.

TO WORK IN RESTAURANT, CATERING FACILITY SEATING 50 PEOPLE.

EXCELLENT OPPORTUNITY FOR QUALIFIED INDIVIDUAL.

460-0080  
OR APPLY IN PERSON  
525 ROUTE 1  
LYNDHURST, N.J.

## RECEPTIONIST

GOOD TYPING SKILLS, PHONE WORK, FILING, OFFICE ORGANIZING. HOURS 9 TO 5.

CALL LOUISE  
751-7900

## WOMEN OR MEN

## WORK FROM HOME

new telephone program. Earn \$4 - \$6 per hr. CALL 998-7216

## WATERHOUSE POSITION

Master person. Full or part time. Day and evening. Apply in person 10AM to 6PM.

BRANCH BROOK CO  
223 BLOOMFIELD AVE.  
NEWARK, N.J.

## MEDICAL SECRETARY

Part time. Wanted for doctor's office in hospital. Experience required. Call 748-8746

Evenings 770-0880

## SCAFFOLD WORKER

SOME MASON EXPERIENCE REFERENCES  
CALL 634-2880

## WAITERS, WAITRESSES, BARTENDERS

FOR NEW RESTAURANT, IN DOWNTOWN NEWARK. CALL BOB OR BARBARA. Between 9am & 11 am. 621-7050

## SECY \$250

IMMEDIATE OPENING. My client seeks secy w/gd skills to join financial dept. diverse, fast, beautiful new offices. F/Pd. Call Kathy Phillips at 743-1600.

## NATIONAL PERSONNEL

347 Bloomfield Ave. Bloomfield

## ART SALES

TEACHERS, HOMEOWNERS, SALESPERSONS. Build a 2nd career in ART/DESIGN SALES. Free lance, flexible. Excellent training, management opportunity.

746-7698

## CLERK TYPIST \$190

like to type? If you have 50wpm, & enjoy people here's an opportunity for you. Lg Co. w/growth potential. F/Pd. Call Kathy Phillips at 743-1600.

## NATIONAL PERSONNEL

347 Bloomfield Ave. Bloomfield

## ART/DECORATING

Need 5 sharp self motivated individuals to learn art & decorating business. Full part time. Training program. No experience necessary. Call 746-1131

3 to 6pm, & weekends

## SALES HELP

Part/Full time. NJ All Pool Center. No experience necessary. Will train. Apply in person 10 to 5.

BRANCH BROOK CO.  
223 BLOOMFIELD AVE.  
NEWARK, N.J.

## GAL-GUY/FRIDAY \$200

LOCAL

Mtl firm seeks indiv to join the team. Moh abt. typg, CRT, banking bkgd reqd. F/Pd. Call Kathy Phillips at 743-1600.

## NATIONAL PERSONNEL

347 Bloomfield Ave. Bloomfield

## CREDIT &amp; COLLECTION CLERK

Customer and telephone contact. approve credit, clerical duties.

Call Lenore  
471-2800

## AUTOMOTIVE

## ACCIS, REC, RECEPTIONIST

Must be able to type. Fast, efficient in acc. rec. Hospital & other benefits.

Call ANDIE  
743-7800

## LABORERS

FOR SERVICE CONTRACTOR TO TRAIN & DEVELOP INTO WORKING FOREMAN. MUST HAVE VALID NEW JERSEY DRIVERS LICENSE & ABILITY TO DRIVE STANDARD TRANS. TRUCKS. LIBERAL BENEFITS. APPLY.

875 Summer Ave.  
Newark  
(On Belleville, Newark line)

## LOST &amp; FOUND

LOST PASSBOOK #01-230-2-00000563-3. First National State Bank & Nutley Mellon office. Payment stopped, return book to bank.

LOST PASSBOOK #240-3-00000 101-1208 1st Natl State Bank & Nutley office. Payment stopped. Return book to bank.

## PETS

FREE TO GOOD HOME. 12 week old male Beagle puppy. Trained. All shots. Call 667-1182 after 10AM.

FREE TO GOOD HOME. PUP. 12 week old male Beagle puppy. Trained. All shots. Call 667-1182 after 10AM.

NON-SMOKING EXPERIENCED MOTHERS WISHED TO BABYSIT IN HER HOME. MONDAY THRU FRIDAY. PLEASE CALL 751-5180

## REAL ESTATE

## FOR RENT

ICE CREAM

Established Good Humor ice cream routes for sale in Suburban Essex. Satisfying seasonal money maker. Please call 239-2601

Own your own Jean-Sportswear. Ladies Apparel. Combination. Accessories. Large size store. National brands. Jordache, Chic, Lee, Vonderbilt, Izod, Gunne Sax, Esprit, Britannia, Calvin Klein, Sergio Valente, Evan Picone, Claiborne, Wambles Only, Bill Blass, Organically Grown, Healthies, 300 others. \$7,900 to \$24,900. inventory, airfare, training, fixtures, grand opening, etc. Mr. Keenan (612) 888-6555

## RESUMES

Call & tell us what you need. 100's available. 1-38

## COMPASS ASSOCIATES

CAREER COUNSELING RESUME PREPARATION CALL 743-6501 MONDAY THRU SATURDAY

## PIANO LESSONS

IN YOUR HOME ALL STYLES-ALL LEVELS ADULT BEGINNERS WELCOME CALL STEVE 667-2196

## THE Guitar Experience

Private lessons at home by experienced pros. Rentals available. Call 201-325-8748

## VIOLIN LESSONS

in your home NEVER TOO YOUNG OR TOO OLD CALL NANCY 661-2010

## RUTE INSTRUCTOR

CONSERVATORY GRADUATE SEEKS STUDENTS. ALL LEVELS. REASONABLE RATES. CALL BARBARA BUFFINGTON 751-0973

## DRUM LESSONS

WITH AL GIANNETTA 429-9622

## EASTER

Cake Decorating Classes made easy by a Master Cake decorator using the Wilton method. MICHAEL THE MASTER CAKE MAGICIAN SCHOOL OF CAKE DECORATING 667-3341

## PATRICIAN ASSOCIATES

249 Franklin Ave., Nutley REALTOR 284-0900

## APARTMENTS WANTED

ATTENTION LANDLORDS! Qualified tenants available for garden apartments, private homes & commercial property. For information call our courteous staff.

PATRICIAN ASSOCIATES 331 249 Franklin Ave., Nutley REALTOR 284-0900

## PIANO LESSONS

Experienced teacher with Master's Degree in Piano Performance. Lessons in your home or my studio. Beginners welcome. Reasonable rates. BRAD TINSLEY 743-3387

## NEED A MATH TUTOR?

CALL 751-5182 TONIGHT BETWEEN 6-9 P.M.

## PERCUSSIONIST

Masters Degree in Music & Music Education. Experience with DRUMS, VIBES, THEORY, & POPULAR PIANO. Reasonable rates. Call JOHN SHERMALLA 736-0344

## ITALIAN CONVERSATION

By native speaker. Reasonable rates. Formerly of Berlitz School of Languages. Call 746-8782 anytime, preferably after 4 P.M.

## SITUATIONS WANTED

I WILL DO HOUSEKEEPING/CHILD CARE. Experienced. With own transportation. Call Monday thru Friday. Call 661-3140.

## BELLEVILLE OFFICE SPACE

SUB-LET FROM MARCH '84 THRU JUNE '85. 1246 BROAD STREET 500 SQ. FT. CREATION AREA AND 2 OFFICES. REASONABLE RENT. CALL 748-3700 WEEK-DAYS

## ALL AREAS SIZES &amp; PRICES

Call & tell us what you need. 100's available. 1-38

## HOMERENTALS

429-2660

## ARE YOU MOVING?

DON'T LEAVE YOUR FUEL OIL BEHIND WE PAY CASH PER GALLON 753-1522

NUTLEY 3 rms. \$275 + util. Avail. immed. 3 1/2 rms. \$400 incl heat. Avail. immed.

CARL A. ORECHIO AGCY 667-7733

BLOOMFIELD 3 room apt. \$300 + util. Avail. immed. Heat & refig. supplied. Superintendant at 124 Franklin St. Bloomfield. Call 759-7114

BELLEVILLE 4 1/2 rm apt. Avail. immed. Mature business couple preferred. No pets. \$450 mo. Plus security & plus utilities. Call 759-7114

BELLEVILLE 5 room apartment. \$300+supply, own utilities. No pets. Avail. March 1st. Call 344-5870

BELLEVILLE 3 large rooms, 1st floor. Married couples preferred. Heat, hot water, gas, \$375 per month. Year lease and security. Fee \$187.50

743-5230 10AM to 4PM

BELLEVILLE 3 rms. \$252 incl heat & hot water. Single woman pref. NUTLEY 3 turn. rms. 1st fl. Single woman pref. 4 rms. 1st fl. \$500 mo incl heat & hot water. Couple pref. All March 1st. occup. Fee + security.

743-5230 10AM to 4PM

BELLEVILLE 3 rms. \$252 incl heat & hot water. Single woman pref. NUTLEY 3 turn. rms. 1st fl. Single woman pref. 4 rms. 1st fl. \$500 mo incl heat & hot water. Couple pref. All March 1st. occup. Fee + security.

743-5230 10AM to 4PM

BELLEVILLE 3 rms. \$252 incl heat & hot water. Single woman pref. NUTLEY 3 turn. rms. 1st fl. Single woman pref. 4 rms. 1st fl. \$500 mo incl heat & hot water. Couple pref. All March 1st. occup. Fee + security.

743-5230 10AM to 4PM

BELLEVILLE 3 rms. \$252 incl heat & hot water. Single woman pref. NUTLEY 3 turn. rms. 1st fl. Single woman pref. 4 rms. 1st fl. \$500 mo incl heat & hot water. Couple pref. All March 1st. occup. Fee + security.

743-5230 10AM to 4PM

BELLEVILLE 3 rms. \$252 incl heat & hot water. Single woman pref. NUTLEY 3 turn. rms. 1st fl. Single woman pref. 4 rms. 1st fl. \$500 mo incl heat & hot water. Couple pref. All March 1st. occup. Fee + security.

743-5230 10AM to 4PM

BELLEVILLE 3 rms. \$252 incl heat & hot water. Single woman pref. NUTLEY 3 turn. rms. 1st fl. Single woman pref. 4 rms. 1st fl. \$500 mo incl heat & hot water. Couple pref. All March 1st. occup. Fee + security.

743-5230 10AM to 4PM

BELLEVILLE 3 rms. \$252 incl heat & hot water. Single woman pref. NUTLEY 3 turn. rms. 1st fl. Single woman pref. 4 rms. 1st fl. \$500 mo incl heat & hot water. Couple pref. All March 1st. occup. Fee + security.

743-5230 10AM to 4PM

BELLEVILLE 3 rms. \$252 incl



REAL ESTATE REAL ESTATE REAL ESTATE REAL ESTATE REAL ESTATE REAL ESTATE REAL ESTATE REAL ESTATE REAL ESTATE

180 Centre St.  
Nutley, N.J. 07110  
667-3440

# GEORGE E. MACMUNN CO.

REALTORS

100 Woodport Road  
Sparta, N.J. 07871  
729-8727



**YANTACAW PARK BEAUTY-NEW LISTING-** beautiful stone fireplace, oak cabinets in large eat-in kitchen, finished rec. room, 3 huge bedrooms, 1 plus baths and in excellent condition.



**IT NEEDS SOME WORK BUT IT IS A GREAT BUY!** four bedrooms, 2 1/2 baths, 2 fireplaces. Retired owner will entertain all offers.

Your Home  
Could Be  
Featured  
Here.

List With  
MacMunn



**NOSTALGIA AND QUALITY** See this traditional tudor on quiet NUTLEY PARK ST. Seven rooms, fireplace, fam. rm. on 1st plus rec. rm. in basement, 1 1/2 baths, completely maint. free exterior. ASKING \$129,900. YOUR OFFER MAY TAKE IT!



**A TYPICAL LAKE MOHAWK HOME PRICED IN \$80's.** Enjoy swimming, boating, skating in a quiet private community of SPARTA. Let us show you this desirable area.

Look for this Emblem



REALTOR

## WHY?

In 1983 Americans nationwide picked Century 21 to 1 over any other real estate organization. Don't you owe it to yourself to find out why, before you decide to market your home? Our performance is guaranteed in writing. Call today and find out "WHY"!!!

**Century 21** WAYNE K. THOMAS  
REALTORS

277 Broad Street Bloomfield, New Jersey  
(201) 429-7400

"Each office independently owned and operated"  
MEMBER OF BLOOMFIELD, GLEN RIDGE,  
NUTLEY, BELLEVILLE BOARD OF REALTORS

## Rec League Going strong

The seventh week of the Senior Boys' Basketball League schedule took place as Walker Transport reached the 6-0 mark by turning back the Opac Oilers 37-29. The losers were led by Herb Petrat (16) and Pat Tortorello (six) and lost their fourth straight. Walker was paced by D. Brooks' 11 points and D. Sandair who added eight. They look forward to an undefeated season next week against winless Viking Barbell.

In a surprising upset, Jackie Luncheonette squeezed by Z & Z Contracting 25-23. M. Debelak (nine) was the big man for the winners, who evened their record to 3-3. Z & Z got 11 points from F. Zangari and 10 from D. Yanzuzi, but saw their mark drop to 3-3. Rolling to its first victory of the season "LUS" overpowered Viking Barbell 47-21. T. Monahan pumped in 22 and J. Mundy added 15 for the winners (1-5). Viking dropped to 0-6 and look for a tough time of it next week against first place Walker Transport.

The battle for second place took place between Vinnie's Deli and Village Video. In the tight contest Vinnie's prevailed 35-29, lifting its record to 5-1. E. Anderson led the charge for the winners by scoring 18 points. Village Video dropped to 4-2 and received 11 points from P. Donizas.

## PUBLIC NOTICE

PUBLIC NOTICE is hereby given that the following proposed ordinance was introduced and passed on first reading at a meeting of the Board of Commissioners of the Township of Belleville held on Monday evening, February 6, 1984 and further notice is hereby given that the Second and Final reading of said ordinance will be considered by said Board of Commissioners at a meeting to be held at the Township Hall, 152 Washington Avenue at Belleville Avenue, Tuesday evening, February 21, 1984 at eight o'clock p.m. when all objections to the passing of the same will be heard and considered.

"An Ordinance to Amend an Ordinance Creating Permanent Positions and Adopting Reclassification & Compensation Plans Promulgated in the New Jersey State Department of Civil Service In And For the Township of Belleville, County of Essex." Adopted September 12, 1966, as amended.

BE IT ORDAINED BY THE BOARD OF COMMISSIONERS OF THE TOWNSHIP OF BELLEVILLE, NEW JERSEY, SECTION I, That Section III of the above entitled ordinance be and the same is hereby amended to set forth after the titles listed herein below, the minimum and maximum salaries set forth opposite said title.

DEPARTMENT OF PUBLIC SAFETY: (EFFECTIVE 1/1/83)

FIRE DEPT.		FULL TIME POSITIONS	
TITLE	C	1ST YR.	2ND YR.
350140 Firefighter	C	\$15,941.	\$17,630.
350090 Captain	C		
350030 Repairman	C		
350010 Dep. Chief	C		
350030 Chief	C		
350140 Firefighter	C	(EFFECTIVE 1/1/84)	
350090 Captain	C	\$16,897.	\$18,688.
350030 Repairman	C		
350010 Dep. Chief	C		
350030 Chief	C		
350141 Firefighter Assigned	(C)		\$300.
350142 Ambulance Driver	(C)		\$400.
631050 Firefighter Assigned	(C)	1/1/83 MIN.	MAX. \$28,948. 1/1/84

## WANTED TO RENT

**PROFESSIONAL COUPLE**  
SEEKING 3 1/2 or 4 1/2 rm apt with reasonable rent.  
Near public transp. Needed on ex. about March 1st.  
References available.  
Please call after 5pm  
997-4244

**FAMILY OF 5 WITH CHILDREN**  
AGES 10-11 & 13 SEEK 1-2 FAMILY HOUSE WITH 3-4 BEDROOMS. NUTLEY PREFERRED. WILL CONSIDER NEIGHBORING TOWNS.  
CALL 784-0583  
JIM OR DONNA

**SHERIFF'S SALE**  
SUPERIOR (CHANI 8-50)  
SUPERIOR COURT OF NEW JERSEY, CHANCERY DIVISION, ESSEX COUNTY, DOCKET NO. F-3611-83. FIRST NATIONAL STATE BANK OF NEW JERSEY, A National Banking Corporation, PLAINTIFF vs. ARTHUR DOBBS and/or Arthur L. Dobbs, et ux, et als, DEFENDANTS. Execution For Sale of Mortgaged Premises.  
By virtue of the above stated writ of Execution, to me directed, I shall expose for sale by Public Auction, in SHERIFF'S OFFICE, Essex County Courts Building in Newark, on Tuesday, the 6th day of March next at one-thirty P.M. (Prevaling Time), MUNICIPALITY: CITY OF NEWARK, COUNTY & STATE: COUNTY OF ESSEX, STATE OF NEW JERSEY.  
STREET & STREET NUMBER: 52 DOVER STREET.  
TAX LOT & BLOCK NUMBERS: LOT 33, BLOCK 4175.  
DIMENSIONS: Approximately 37.6 feet x 100.0 feet x 37.6 feet x 100.0 feet.  
NEAREST CROSS STREET: Approximately 87.50 feet southerly from Cliff Street.  
A full legal description is available at the Office of the Register in Mortgage Book 4705, Page 259.  
The approximate amount of the Judgment to be satisfied by said sale is the sum of FOUR THOUSAND ONE HUNDRED TWENTY ONE DOLLARS AND NINETY FIVE CENTS (\$4,121.95), together with the costs of this sale.  
The Sheriff reserves the right to adjourn the sale from time to time as provided by law.  
Newark, N.J. January 30, 1984  
THOMAS J. D'ALESSIO, Sheriff  
Booth, Kenny, Dougherty & McKenna, Attorneys  
The Belleville Times  
Feb. 9, 16, 23, March 1, 1984  
Fee: \$78.12  
No. 884-41

# NEW EE BONDS

85% of Market Rates

That's what Series EE Savings Bonds now offer savers. Just hold your Bonds five years or longer. And there's a minimum guaranteed yield to protect you against steep market declines. It's opportunity without risk.

## TAKE STOCK IN AMERICA

There's never been a better time.

## BELLEVILLE PROPOSALS

Sealed proposals will be received by the Purchasing Board at the commission chambers, 152 Washington Avenue, Belleville, New Jersey on Friday, February 24, 1984 on or before 11:00 a.m. for the purchase of Sporting Equipment for the Department of Parks and Public Property of the Township of Belleville, New Jersey in accordance with the specifications on file in the office of the Purchasing Agent, 152 Washington Avenue, Belleville, New Jersey. Bidders are required to comply with the requirements of R.I. 178-127 which shall become part of the specifications.  
The Township of Belleville reserves the right to reject any and all bids.  
Mary Lou Hood  
Township Clerk  
The Belleville Times  
Feb. 9, 1984  
Fee: \$78.12  
No. 884-40

## PARK MANOR NURSING HOME

Dedicated to Better Patient Care  
Specializing in Female Patients  
PROFESSIONAL NURSING STAFF  
REHABILITATION PROGRAM  
PHYSICAL THERAPY  
OXYGEN FRACTURE EQUIPMENT  
SPECIAL DIETS

• AGED  
• CONVALESCENT  
• CHRONICALLY ILL  
• POST-OPERATIVE  
23 Park Place, Bloomfield  
743-7772  
Member of NJ American Nursing Home Assoc.  
Professional Care in a Homelike Environment

## Holy Family School Registration and Enrollment Dates

An advertisement celebrating Catholic Schools Week in last week's edition incorrectly listed a registration time for Holy Family School in Nutley. The correct dates and times are:

March 7th 1-2 P.M.  
March 8th 9-11 A.M.  
7-8 P.M.

For more information please call: 667-2049

**9 3/4 %  
MTGES.**  
Available To All  
Qualified Buyers  
A.P.R. TO 7.5%

**BELLEVILLE**  
JUST LISTED  
2 FAMILY  
Ultra mod. 6 & 3. Extra lg lot.  
2 car gar. Excel income

**BELLEVILLE**  
4 BDRM COLONIAL  
JUST REDUCED  
2 full baths, 1st fln in rm. all  
natural trim. A must to see at  
only \$77,900

**goyel**  
REALTORS  
201.751.7500

**BELLEVILLE**  
HOUSE FOR SALE  
By Owner  
Custom Built  
BRICK RANCH

Three Bedrooms, L.R. EIK  
W/21' of Custom Cabinetry  
and 12' Snack Bar. 15 x 30  
Rec Room W/16' Wet Bar of  
white Georgia marble. Second  
kitchen in basement. Two  
car garage. Two car  
built-in garage. Two car  
Amana thru wall air conditioning.  
patio w double  
charmlog gas barbecue and  
outdoor lighting.  
PRICE \$98,000  
Call for App.  
997-7121 Bus Hours  
or 759-3344  
after 6  
Principals Only

**BELLEVILLE**  
ALL BRICK  
2 family with 2 car gar.  
50 x 100 lot. Immac. Good in-  
come. Must be seen. Call to  
day.  
Since 1917  
EUGENE J.  
Reilly's  
Real Estate Insurance  
759-1682

# WE'RE OPEN FOR BUSINESS



Check Your Local ShopRite for Store Hours or Call Our Toll Free Number (800)492-4173 Weekdays 8AM-7PM, Sat. & Sun., 8AM-6PM

## The Dairy Place

<b>WHY PAY MORE</b>	<b>69¢</b>
<b>Cream Cheese</b>	8-oz. pkg.
AMERICAN	
Borden Singles	12-oz. \$1.49
WHOLE MILK	
Colombo Yogurt	3 8-oz. \$1.00
MINUTE MAID	
Orange Juice	1/2-gal. cart. \$1.29
PILLSBURY	
Ready Pie Crust	15-oz. pkg. 99¢

## The Deli Place

<b>MILD OR TANGY</b>	<b>\$1.99</b>
<b>ShopRite Pork Roll</b>	1 1/2-lb. pkg.
<b>WHY PAY MORE</b>	
Mohawk Canned Ham	3-lb. can \$4.99
THREE KINGS SUCED	
White's Bacon	1-lb. pkg. \$1.39
<b>WHY PAY MORE</b>	
Herrud Meat Franks	1-lb. pkg. 89¢
<b>WHY PAY MORE</b>	
Herrud Beef Franks	1-lb. pkg. \$1.09

## The Bakery Place

<b>ASSORTED VARIETIES</b>	<b>BUY 1 AT 79¢ &amp; GET 1 FREE</b>
<b>Aladdin Pita</b>	12-oz. pkg.
SAVE 15¢ ShopRite REG. OR SANDWICH	
White Bread	2 20-oz. 99¢
SAVE 16¢ PUMPKIN NICKEL, SEEDED OR UNSEEDED	
ShopRite Rye Bread	2-lb. loaf \$1.19
MATHEWS ALL NATURAL WHITE, WHEAT OR CINN.	
English Muffins	6-oz. pkg. 89¢
SAVE 12¢ ASSORTED VARIETIES	
ShopRite Pretzels	16-oz. bag 69¢

## The Frozen Food Place

<b>WHY PAY MORE</b>	<b>\$1.99</b>
<b>Elio's 9-Slice Cheese Pizza</b>	24-oz. pkg.
ShopRite GRADE 'A' CAULIFLOWER CHOPPED BROCCOLI	
Broccoli Spears	2 10-oz. 99¢
BROSSE'S SPINACH HALVES W/ CHEESE, CAULIFL. & M.C. JAMBON/ORE OR CAULIFL. & CARROT ROMANZA	
Vegetables GREEN	3 10-oz. \$1.00
ShopRite GRADE 'A' REG. CUT OR FRENCH STYLE	
Green Beans	3 3-oz. \$1.00
CHEESE OR SAUSAGE	
Jeno's Pizza	BUY 1 AT \$1.89 & GET 1 FREE
ASSORTED VARIETIES	
Orchard Hill Quiche	6-oz. pkg. FREE

## The Ice Cream Place

<b>ASSORTED FLAVORS</b>	<b>\$1.99</b>
<b>Louis Sherry Ice Cream</b>	1/2-gal. cont.
ShopRite ICE CREAM	
Sandwiches	12-pk. box \$1.79
ShopRite	
Ice Cream Bars	12-pk. box \$1.59

## The Appy Place

<b>WATER ADDED</b>	<b>\$1.19</b>
<b>Domestic Cooked Ham</b>	1/2-lb.
IMPORTED FINLAND	
Swiss Cheese	1/2-lb. \$1.49
SHOP'R KOSHER	
Skinless Franks	1-lb. pkg. \$2.79
COLE SLAW, MACARONI OR	
Potato Salad	1-lb. 59¢
STORE SUCED	
Turkey Breast	1/2-lb. \$1.59

**ShopRite Senior Citizen Coupon**

WITH THIS COUPON

**\$2 OFF**

TOWARD THE PURCHASE OF ANY NEW OR TRANSFERRED\* PRESCRIPTION (with physician's approval)

62 years of age or older (verification of age required)

\*Prescription is \$2.00 or less. There will be no charge. One coupon per prescription. (Good in any ShopRite Pharmacy or Pharmacy Dept. Not where prohibited by law. In N.J. P.A. Program not included. This coupon is effective thru 2/11/84 in any ShopRite Supermarket with a ShopRite Pharmacy or Pharmacy Dept. Some ShopRite Pharmacies operating in Pennsylvania trade under the name of Eagle Drugs. 2000 N. 4th Highway, Reading, Pa. 17102. Excludes Food, Hardware, P.A. & Large 1,200 sq. ft. Supermarkets. P.A. Please check your local ShopRite Pharmacy or Pharmacy Dept. for hours of operation. This does not vary from state to state.

SAVE \$2.00

**BEAUTIFUL SHEFFIELD**

**Bone White China**

THIS WEEK'S FEATURE:

**Bread & Butter Plate**

**59¢**

**ALL VARIETIES**

**Scot-towels**

119-ct. roll

**59¢**

**ALL VARIETIES**

**Triple Soda**

2-lb. 2-lb. 99¢

**ALL VARIETIES**

**Scot-towels**

119-ct. roll

**59¢**

**ALL VARIETIES**

**Triple Soda**

2-lb. 2-lb. 99¢

**ALL VARIETIES**

**Triple Soda**

2-lb. 2-lb. 99¢

**ALL VARIETIES**

**Scot-towels**

119-ct. roll

**59¢**

**ALL VARIETIES**

**Triple Soda**

2-lb. 2-lb. 99¢

**ALL VARIETIES**

**Scot-towels**

119-ct. roll

**59¢**

**ALL VARIETIES**

**Triple Soda**

2-lb. 2-lb. 99¢

**THE MEATING® PLACE**

**HOLLY FARMS GRADE 'A' WHOLE**

**Frying Chickens**

1-lb. 47¢

**NOT LESS THAN**

**80% Lean Ground Beef**

ANY SIZE PKG. 1-lb. \$1.37

**U.S.D.A. CHOICE BEEF RIB**

**Boneless Club Steak**

1-lb. \$3.97

**BUY JUMBO PAKS & SAVE OVER OUR REG. LOW PRICES, 3-LBS. OR MORE PER PKG.**

**HOLLY FARMS, WHOLE WITH THIGHS**

**Chicken Legs**

1-lb. 87¢

**HOLLY FARMS**

**Chicken Thighs**

1-lb. 97¢

**HOLLY FARMS, DARK MEAT**

**Chicken Drumsticks**

1-lb. \$1.07

**HOLLY FARMS**

**Chicken Wings**

1-lb. 77¢

**HOLLY FARMS, WHIRL CAGE, SPLIT**

**Chicken Breast**

1-lb. \$1.47

**U.S.D.A. CHOICE BEEF LOIN TOP BUTT**

**Boneless Sirloin Steak**

1-lb. \$2.27

**Double Your Money Back**

**Meat Guarantee**

**COMPLETE DETAILS AT YOUR ShopRite**

**Pick of the Chick**

HOLLY FARMS WHOLE WHIRL CAGE

**Chicken Breast**

1-lb. \$1.47

HOLLY FARMS, BONELESS

**Chicken Breast**

1-lb. \$2.57

**Thom Apple Valley**

CRYO VAC. SHANK PORTION

**Smoked Hams**

1-lb. \$1.07

CRYO VAC. BUTT PORTION

**Smoked Hams**

1-lb. \$1.17

## The Produce Place

<b>WASHINGTON STATE U.S. EXTRA FANCY RED OR GOLDEN</b>	
<b>Delicious Apples</b>	
<b>39¢</b>	
CALIFORNIA	
Iceberg Lettuce	large head 59¢
FRESH	
Sweet Pineapple	1-lb. 39¢
THOMPSON, IMPORTED OR FLAME	
Seedless Grapes	1-lb. \$1.49
40 SIZE, FLORIDA, WHITE	
Seedless Grapefruit	4 for 99¢
CALIFORNIA, SUNKIST	
Navel Oranges	4-lb. bag \$1.69
TANGY SCALLIONS (3 BUNCHES) OR	
Zesty Radishes	3 6-oz. \$1.00
U.S. #1 GRADE, CALIFORNIA	
Sweet Carrots	2 1-lb. 89¢
100 SIZE, FLORIDA	
Juice Oranges	6 for 89¢
<b>Give A Gift Of Love</b>	
FOILED, BOW, GIFT CARD, TOP QUALITY FLORIST	
Gift Mums	6-in. pot \$5.99
GIFT FOILED WITH PICK, SWEETHEART	
Ivy Hearts	4-in. pot \$5.99
CALIFORNIA RED TIP	
Jade Plants	4-in. pot \$1.49
(Plants Avail. in stores with Plant Depts.)	

## Fresh Bake Shoppe Where Avail

<b>FRESH BAKED</b>	
<b>Hot Large Italian Bread</b>	1-lb. 69¢
REGULAR OR DUTCH	
8" Apple Pie	24-oz. \$2.19
<b>The Fish Market</b>	
U.S. GRADE 'A' FRESH, NEW ENGLAND	
Filet Of Scrod Cod*	1-lb. \$2.19
U.S. GRADE 'A' SMALL SWEET & TENDER	
Fresh Scallops*	1-lb. \$2.99
INDIV. QUICK FROZEN, NATURAL CRAB FLAVOR	
Seafood Sticks	12-oz. pkg. \$2.49
INDIV. QUICK FROZEN PEELED & CLEANED	
Salad Shrimp	16-oz. pkg. \$2.99

## Health & Beauty Aids

<b>CREME RINSE OR DRY ONLY OR EX BODY FABERGE WHEAT &amp; HONEY</b>	
<b>Shampoo or Conditioner</b>	10-oz. 1-lb. \$1.00
ShopRite 500 MG	
Vitamin C	100 btl. of \$2.49
VASELINE REG. OREX. STRENGTH	
Intensive Care	10-oz. btl. \$1.59
REG. SPECIAL LIME & SKIN CONDITIONER	
Edge Shave Gel	7-oz. can \$1.69
WHY PAY MORE	
Kotex Maxi Pads	30 box of \$2.29

## General Merchandise

<b>10W40 Mobil Motor Oil</b>	1-qt. plus cont. 79¢
DOW	
Anti-Freeze	1 gal. cont. \$3.49
72x90" ASST. PATTERN PRINTS (WHERE AVAIL.)	
Cannon® Blankets	es. \$4.99
ShopRite 40, 60, 75 OR 100 WATT	
Soft White Bulbs	2 pkgs. of \$3.00
ShopRite AA	
Alkaline Batteries	4-pk. \$2.00
ShopRite 9-VOLT (1 PK) OR C OR D	
Alkaline Batteries	2 pkgs. of \$3.00

## February is National Heart Association Month ♥

Nutley Park Shop-Rite in cooperation with the Nutley First Aid Squad will conduct a free blood pressure screening program on Wednesday, February 22nd and Thursday, February 23rd from 9 a.m. to 1 p.m. each day. Come to the Pharmacy Department in Nutley Shop-Rite during the indicated time and help yourself with a free blood pressure test administered by the skilled volunteers of the Nutley First Aid Squad.

# We're Not Just A Supermarket... We're ShopRite

In order to assure a sufficient supply of sales items for all our customers, we must reserve the right to limit the purchase to units of 4 of any sales items, except where otherwise noted. Not responsible for typographical errors. Prices effective Sun. Feb. 5 thru Sat. Feb. 11, 1984. None sold to other retailers or wholesalers. Artwork does not necessarily represent item on sale. It is for display purposes only. Copyright © WAKEFERN FOOD CORPORATION 1984